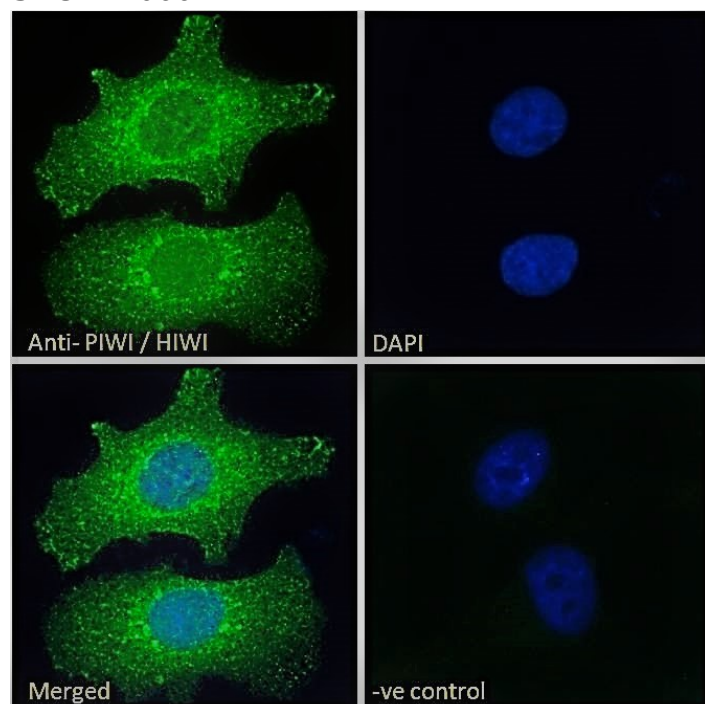


GOAT ANTI-PIWI / HIWI ANTIBODY

SKU: EB06677



SPECIFICATIONS

Formulation Supplied at 0.5 mg/ml in Tris saline, 0.02% sodium azide, pH7.3 with 0.5% bovine serum albumin.

Unit Size 100 µg

Storage Instructions Aliquot and store at -20°C. Minimize freezing and thawing.

Synonym / Alias Names piwi homolog; piwi-like 1|MIWI|homolog of Drosophila piwi|piwi (Drosophila)-like 1|piwi-like 1 (Drosophila)|PIWI|HIWI|PIWIL1

Usage Summary **Immunofluorescence:** Strong expression of the protein seen in the nuclei and cytoplasm of U2OS and HeLa cells. Recommended concentration: 10µg/ml. **Flow Cytometry:** Flow cytometric analysis of HeLa cells. Recommended concentration: 10ug/ml.

Accession ID NP_004755.2; NP_001177900.1

Blocking Peptide EBP06677

Immunogen	Peptide with sequence C-SNRKDKYDAIKKY, from the internal region of the protein sequence according to NP_004755.2; NP_001177900.1.
Product Comments	This antibody is expected to recognise both reported isoforms (NP_004755.2; NP_001177900.1).
Peptide Sequence	C-SNRKDKYDAIKKY
Purification Method	Purified from goat serum by ammonium sulphate precipitation followed by antigen affinity chromatography using the immunizing peptide.
Shipping Instructions	Refrigerated
Predicted Species	Human, Mouse, Rat, Dog, Pig, Cow
Reactive Species	Human
Human Gene ID	9271
Mouse Gene ID	57749
Product Grade	https://prod-vector-labs-pimcore-assets.s3.us-east-1.amazonaws.com/assets/products/image/elite_plus_medium.png
IHC Results	In paraffin embedded Human Testis shows textured cytoplasm staining in all germ cells. Recommended concentration: 4-6µg/ml.
ELISA Detection Limit	Antibody detection limit dilution 1:64000.
Application Type	Pep-ELISA, IF, IHC, FC

DOCUMENTS

- [Data Sheet](#)

GALLERY IMAGES

