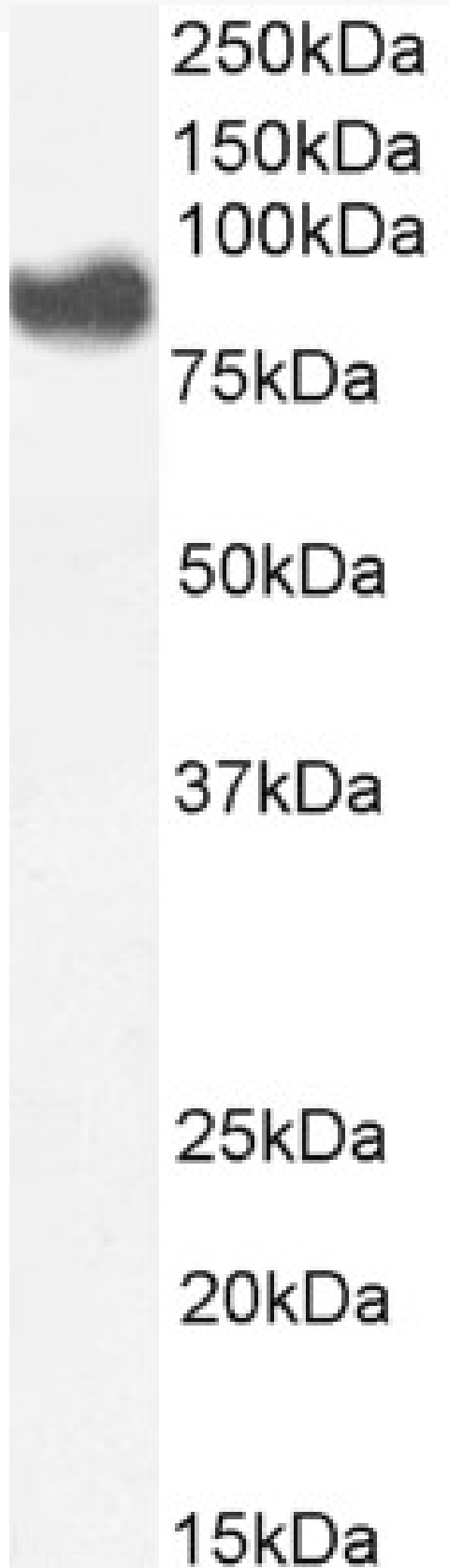


GOAT ANTI-PLA2G4A ANTIBODY

SKU: EB10113



SPECIFICATIONS

Formulation	Supplied at 0.5 mg/ml in Tris saline, 0.02% sodium azide, pH7.3 with 0.5% bovine serum albumin.
Unit Size	100 µg
Storage	
Instructions	Aliquot and store at -20°C. Minimize freezing and thawing.
Synonym / Alias	PLA2G4A PLA2G4 phospholipase A2, group IVA (cytosolic, calcium-dependent) phosphatidylcholine 2-acylhydrolase MGC126350 lysophospholipase cytosolic phospholipase A2, group IVA cPLA2-alpha calcium-dependent phospholipid-binding protein
Names	
Usage Summary	<p>Immunofluorescence: Strong expression of the protein seen in the cytoplasm of A549 cells.</p> <p>Recommended concentration: 10µg/ml. <p>Flow Cytometry: Flow cytometric analysis of A549 cells. Recommended concentration: 10ug/ml.</p></p>
Accession ID	NP_077734.1
Blocking Peptide	EBP10113
Immunogen	Peptide with sequence C-QEKTFRQQRKEHIR, from the internal region of the protein sequence according to NP_077734.1.
Peptide Sequence	C-QEKTFRQQRKEHIR
Purification Method	Purified from goat serum by ammonium sulphate precipitation followed by antigen affinity chromatography using the immunizing peptide.
Shipping Instructions	Refrigerated
Predicted Species	Human, Mouse, Rat
Reactive Species	Human
Human Gene ID	5321
Product Grade	https://prod-vector-labs-pimcore-assets.s3.us-east-1.amazonaws.com/assets/products/image/elite_plus_medium.png
IHC Results	Paraffin embedded Human Uterus. Recommended concentration: 3.75µg/ml.
ELISA Detection Limit	Antibody detection limit dilution 1:32000.
Western Blot	Approx 80-85kDa band observed in lysates of cell line A549 (calculated MW of 85.2kDa according to NP_077734.1). Preliminary experiments also showed an 85- 90kDa band in lysates of cell lines A431, HeLa and NIH-3T3 Recommended concentration:0.3-1µg/ml. Primary incubation 1 hour at room temperature.Preliminary testing was unsuccessful on Rat for this particular batch.
Application Type	Pep-ELISA, WB, IF, FC, IHC

DOCUMENTS

- [Data Sheet](#)

GALLERY IMAGES

