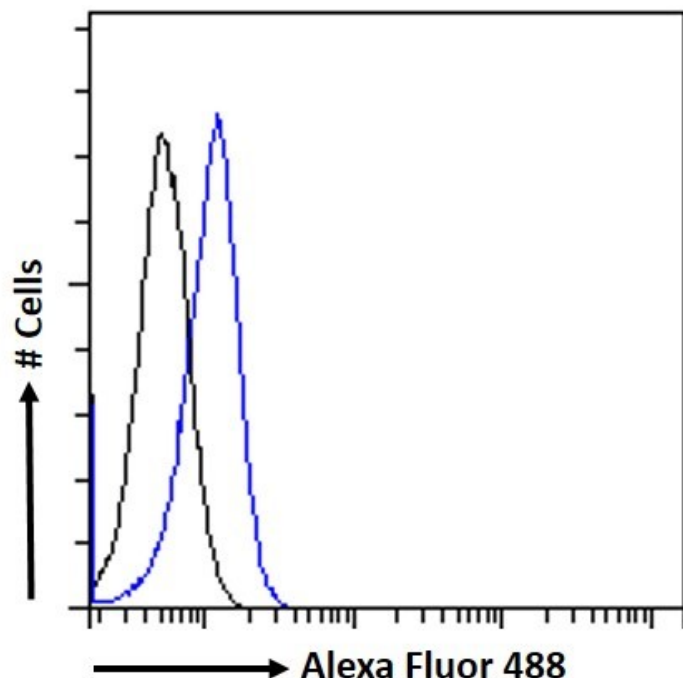


# GOAT ANTI-PLA2R1 ANTIBODY

SKU: EB09426



## SPECIFICATIONS

**Formulation** Supplied at 0.5 mg/ml in Tris saline, 0.02% sodium azide, pH7.3 with 0.5% bovine serum albumin.

**Unit Size** 100 µg

**Storage Instructions** Aliquot and store at -20°C. Minimize freezing and thawing.

**Synonym / Alias Names** phospholipase A2 receptor 1|PLA2R|PLA2IR|PLA2G1R|PLA2-R|CLEC13C|phospholipase A2 receptor 1, 180kDa|PLA2R1

**Usage Summary** <strong>Flow Cytometry:</strong> Flow cytometric analysis of HeLa cells. Recommended concentration: 10ug/ml.

**Accession ID** NP\_031392.3; NP\_001007268.1; NP\_001182570.1

**Blocking Peptide** EBP09426

<b>Immunogen</b>	Peptide with sequence C-EKKKDTPKQHGT, from the Internal region of the protein sequence according to NP_031392.3; NP_001007268.1; NP_001182570.1.
<b>Product</b>	This antibody is expected to recognize all reported isoforms (NP_031392.3; NP_001007268.1;
<b>Comments</b>	NP_001182570.1).
<b>Peptide Sequence</b>	C-EKKKDTPKQHGT
<b>Purification Method</b>	Purified from goat serum by ammonium sulphate precipitation followed by antigen affinity chromatography using the immunizing peptide.
<b>Shipping Instructions</b>	Refrigerated
<b>Predicted Species</b>	Human, Dog, Pig
<b>Reactive Species</b>	Human
<b>Human Gene ID</b>	22925
<b>Product Grade</b>	<a href="https://prod-vector-labs-pimcore-assets.s3.us-east-1.amazonaws.com/assets/products/image/elite_medium.png">https://prod-vector-labs-pimcore-assets.s3.us-east-1.amazonaws.com/assets/products/image/elite_medium.png</a>
<b>ELISA Detection Limit</b>	Antibody detection limit dilution 1:1000.
<b>Western Blot</b>	Preliminary testing showed a band at approx 150kDa in HeLa cell lysate after 2µg/ml antibody staining (calculated MW of 153kDa according to NP_001007268.1 Primary incubation 1 hour at room temperature.
<b>Application Type</b>	Pep-ELISA, FC

## DOCUMENTS

- [Data Sheet](#)

## GALLERY IMAGES

