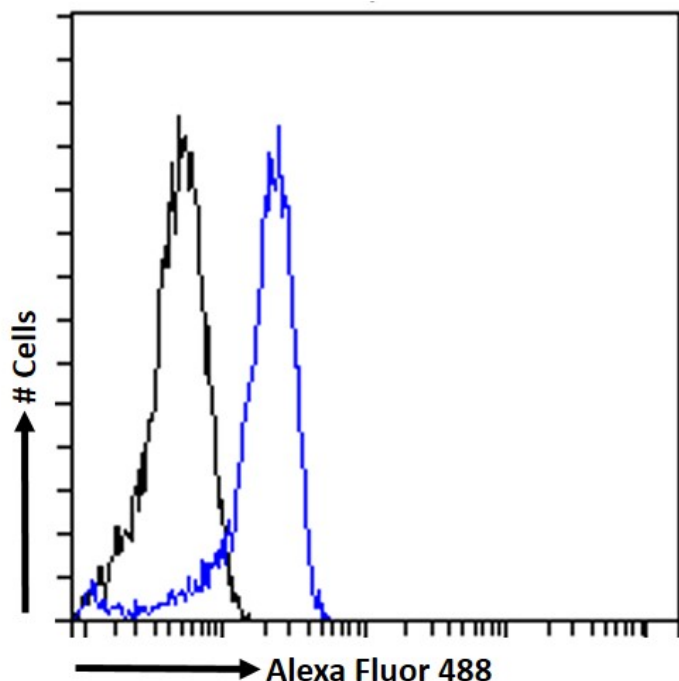


GOAT ANTI-PNPLA2 / ATGL ANTIBODY

SKU: EB07640



SPECIFICATIONS

Formulation Supplied at 0.5 mg/ml in Tris saline, 0.02% sodium azide, pH7.3 with 0.5% bovine serum albumin.

Unit Size 100 µg

Storage Instructions Aliquot and store at -20°C. Minimize freezing and thawing.

Synonym / Alias Names triglyceride hydrolase|transport-secretion protein 2.2|desnutrin|adipose triglyceride lipase|TTS-2.2|FP17548|DKFZp667M109|1110001C14Rik|patatin-like phospholipase domain containing 2|ATGL|PNPLA2

Usage Summary **Immunofluorescence:** Strong expression of the protein seen in the cytoplasm and lipid droplets of HEK293 cells. Recommended concentration: 10µg/ml. **Flow Cytometry:** Flow cytometric analysis of HEK293 cells. Recommended concentration: 10ug/ml.

Accession ID NP_065109.1

Blocking Peptide EBP07640

Immunogen	Peptide with sequence C-PARPHGPEDKDQ, from the internal region of the protein sequence according to NP_065109.1.
Peptide Sequence	C-PARPHGPEDKDQ
Purification Method	Purified from goat serum by ammonium sulphate precipitation followed by antigen affinity chromatography using the immunizing peptide.
Shipping Instructions	Refrigerated
Predicted Species	Human
Reactive Species	Human
Human Gene ID	57104
Product Grade	https://prod-vector-labs-pimcore-assets.s3.us-east-1.amazonaws.com/assets/products/image/elite_medium.png
ELISA Detection Limit	Antibody detection limit dilution 1:8000.
Application Type	Pep-ELISA, IF, FC

DOCUMENTS

- [Data Sheet](#)

GALLERY IMAGES

