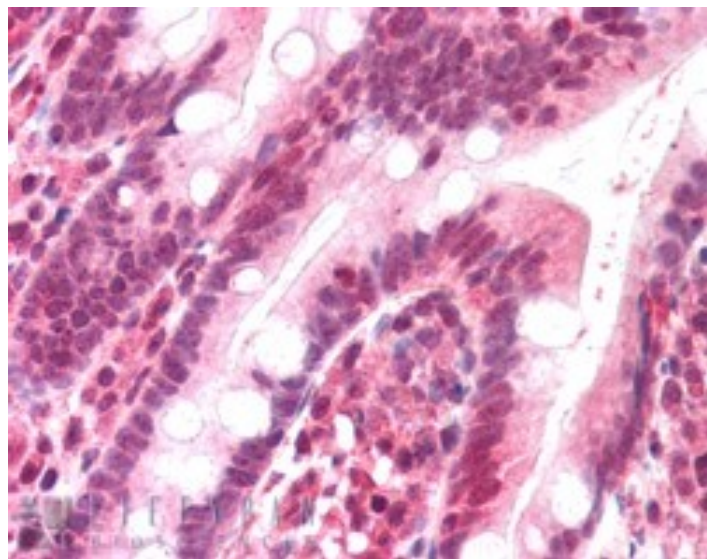


# GOAT ANTI-POLL / POLKAPPA ANTIBODY

**SKU:** EB06206



## SPECIFICATIONS

**Formulation** Supplied at 0.5 mg/ml in Tris saline, 0.02% sodium azide, pH7.3 with 0.5% bovine serum albumin.

**Unit Size** 100 µg

**Storage Instructions** Aliquot and store at -20°C. Minimize freezing and thawing.

**Synonym / Alias Names** POLL|BETA-N|POL-KAPPA|polymerase (DNA directed), lambda|polymerase (DNA-directed), lambda|DNA polymerase kappa (DNA polymerase beta-N)|RP11-529I10.1|BETAN|FLJ46002|POLKAPPA|DNA polymerase beta-2|DNA polymerase kappa (DNA polymerase beta-N)|DNA polymerase lamda2|DNA-directed DNA polymerase lambda|OTTHUMP00000020323|pol beta2|pol lambda

**Accession ID** NP\_037406.1

**Blocking Peptide** EBP06206

**Immunogen** Peptide with sequence C-LGLPYREPAERDW, from the C Terminus of the protein sequence according to NP\_037406.1.

**Product Comments** It has been brought to our attention that this product may crossreact with Pol beta (NP\_002681), an evolutionarily related polymerase with a predicted size of 39 kDa. The overall % of identity is not very high (about 32% in the core) but considering only the peptide that we used as immunogen the two share the sequence YREP\*\*R\*\* at the C-terminus. Further the protein structures appear to be very similar in this region.

<b>Peptide Sequence</b>	C-LGLPYREPAERDW
<b>Purification Method</b>	Purified from goat serum by ammonium sulphate precipitation followed by antigen affinity chromatography using the immunizing peptide.
<b>Shipping Instructions</b>	Refrigerated
<b>Predicted Species</b>	Human
<b>Reactive Species</b>	Human
<b>Human Gene ID</b>	27343
<b>Mouse Gene ID</b>	56626
<b>Product Grade</b>	<a href="https://prod-vector-labs-pimcore-assets.s3.us-east-1.amazonaws.com/assets/products/image/elite_medium.png">https://prod-vector-labs-pimcore-assets.s3.us-east-1.amazonaws.com/assets/products/image/elite_medium.png</a>
<b>ELISA Detection Limit</b>	Antibody detection limit dilution 1:32000.
<b>Western Blot</b>	Approx 60kDa band observed in cell lysates of A549 and approx 60-70kDa in cell lysates of HepG2 (calculated MW of 63.5kDa according to Human NP_037406.1). Recommended concentration: 0.5-1µg/ml.
<b>Application Type</b>	Pep-ELISA, WB

## DOCUMENTS

- [Data Sheet](#)

## GALLERY IMAGES

