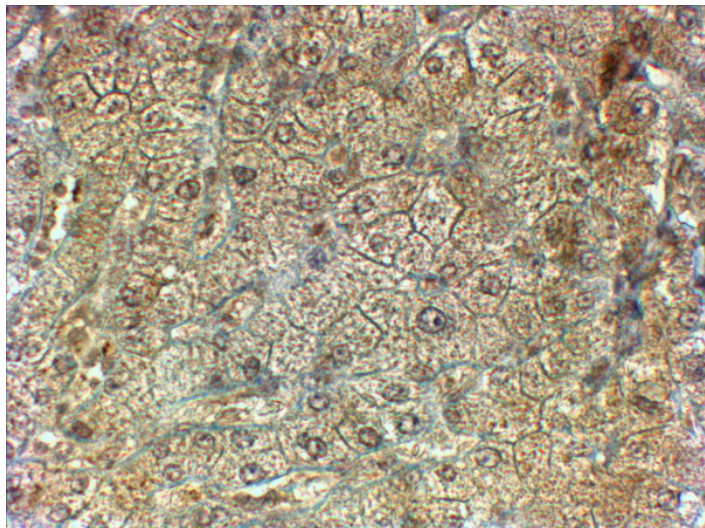


GOAT ANTI-PON2 ANTIBODY

SKU: EB09836



SPECIFICATIONS

Formulation Supplied at 0.5 mg/ml in Tris saline, 0.02% sodium azide, pH7.3 with 0.5% bovine serum albumin.

Unit Size 100 µg

Storage Instructions Aliquot and store at -20°C. Minimize freezing and thawing.

Synonym / Alias Names A-esterase 2|aromatic esterase 2|paraoxonase 2|paraoxonase nirs|serum aryldialkylphosphatase 2|serum paraoxonase/arylesterase 2|PON2

Accession ID NP_000296.2; NP_001018171.1

Blocking Peptide EBP09836

Immunogen Peptide with sequence C-ERLLALRNRLKAS, from the internal region of the protein sequence according to NP_000296.2; NP_001018171.1.

Product Comments This antibody is expected to recognize isoforms 1 and 2 (NP_000296.2; NP_001018171.1).

Peptide Sequence C-ERLLALRNRLKAS

Purification Method Purified from goat serum by ammonium sulphate precipitation followed by antigen affinity chromatography using the immunizing peptide.

Shipping Instructions	Refrigerated
Predicted Species	Human, Mouse, Rat, Pig, Dog, Cow
Reactive Species	Human
Human Gene ID	5445
Mouse Gene ID	330260
Rat Gene ID	296851
Product Grade	https://prod-vector-labs-pimcore-assets.s3.us-east-1.amazonaws.com/assets/products/image/elite_medium.png
IHC Results	In paraffin embedded Human Liver shows membranous staining surrounding the hepatocytes and some background. Recommended concentration, 2-4µg/ml.
ELISA	
Detection Limit	Antibody detection limit dilution 1:4000.
Application Type	Pep-ELISA, IHC

DOCUMENTS

- [Data Sheet](#)

GALLERY IMAGES

