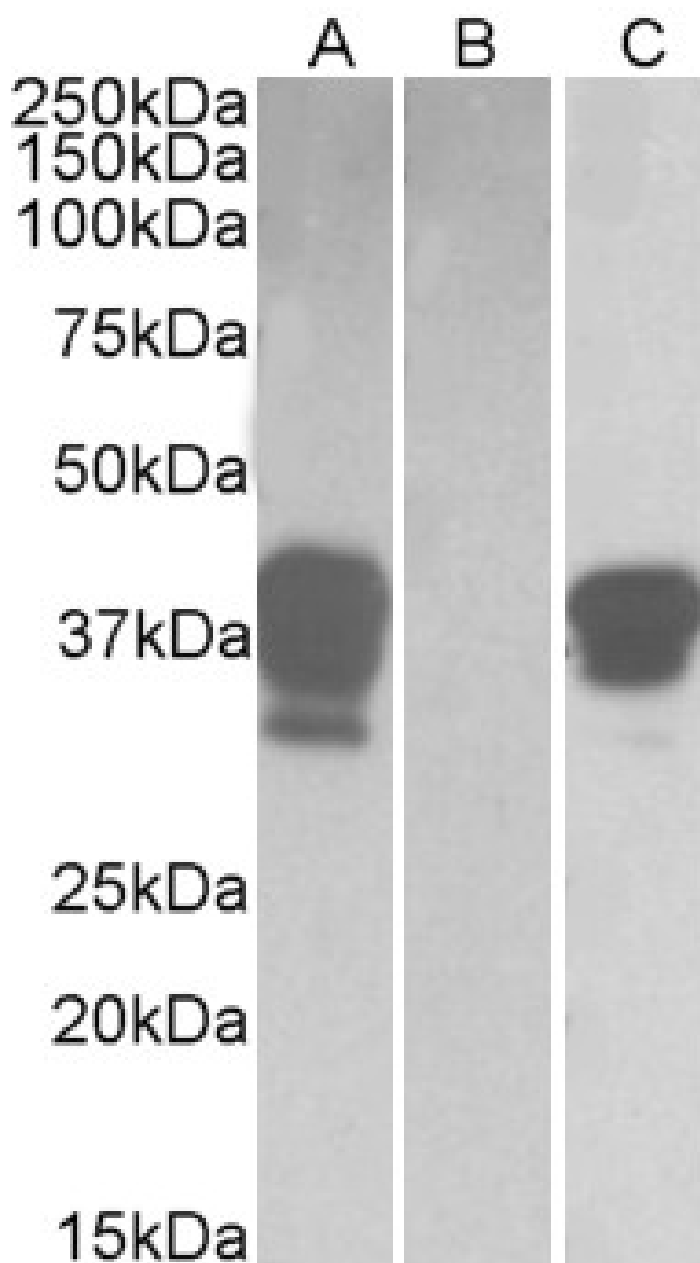


GOAT ANTI-POU2AF1 ANTIBODY

SKU: EB10018



SPECIFICATIONS

Formulation	Supplied at 0.5 mg/ml in Tris saline, 0.02% sodium azide, pH7.3 with 0.5% bovine serum albumin.
Unit Size	100 µg
Storage	Aliquot and store at -20°C. Minimize freezing and thawing.
Instructions	
Synonym /	
Alias	BOB1 OBF1 OBF-1 OCAB POU class 2 associating factor 1 POU domain, class 2, associating factor 1 POU2AF1
Names	
Usage	Purchase the +ve control! The transfected lysate used to QC this product is available for sale. Please email
Summary	sales@everestbiotech.com to request datasheet, pricing and delivery information.
Accession	
ID	NP_006226.2
Blocking	
Peptide	EBP10018
Immunogen	Peptide with sequence C-DSDAYALNHTLSVE, from the C Terminus of the protein sequence according to NP_006226.2.
Peptide	
Sequence	C-DSDAYALNHTLSVE
Purification	Purified from goat serum by ammonium sulphate precipitation followed by antigen affinity chromatography
Method	using the immunizing peptide.
Shipping	
Instructions	Refrigerated
Predicted	
Species	Human, Dog, Cow
Reactive	
Species	Human
Human	
Gene ID	5450
Product	
Grade	https://prod-vector-labs-pimcore-assets.s3.us-east-1.amazonaws.com/assets/products/image/elite_medium.png
IHC Results	In paraffin embedded Human Spleen shows nuclear staining in the germinal center with stronger nucleoli staining in some of the B cells. Recommended concentration, 3-5µg/ml.
ELISA	
Detection	Antibody detection limit dilution 1:8000.
Limit	
Western	
Blot	In transfected HEK293 transiently expressing full-length Human POU2AF1 (myc and DYKDDDDK tagged), a band of approx. 38kDa was observed. No bands were observed in mock-transfected HEK293 and the same band was observed using anti-DYKDDDDK tag antibody. Recommended concentration, 1-2µg/ml.
Application	
Type	Pep-ELISA, WB-Trf, IHC

DOCUMENTS

- [Data Sheet](#)

GALLERY IMAGES

