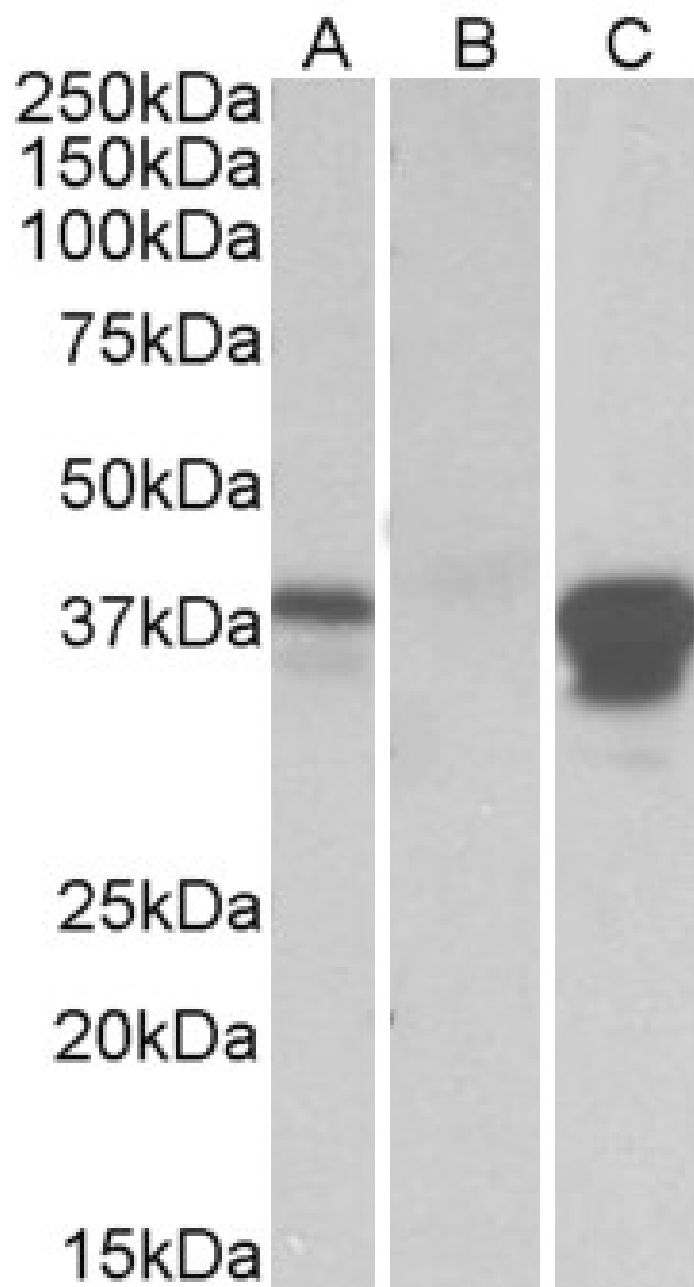


## GOAT ANTI-POU2AF1 ANTIBODY

SKU: EB10017



## SPECIFICATIONS

<b>Formulation</b>	Supplied at 0.5 mg/ml in Tris saline, 0.02% sodium azide, pH7.3 with 0.5% bovine serum albumin.
<b>Unit Size</b>	100 µg
<b>Storage</b>	
<b>Instructions</b>	Aliquot and store at -20°C. Minimize freezing and thawing.
<b>Synonym /</b>	
<b>Alias</b>	BOB1 OBF1 OBF-1 OCAB POU class 2 associating factor 1 POU domain, class 2, associating factor 1 POU2AF1
<b>Names</b>	
<b>Usage</b>	Purchase the +ve control! The transfected lysate used to QC this product is available for sale. Please email
<b>Summary</b>	sales@everestbiotech.com to request datasheet, pricing and delivery information.
<b>Accession</b>	
<b>ID</b>	NP_006226.2
<b>Blocking</b>	
<b>Peptide</b>	EBP10017
<b>Immunogen</b>	Peptide with sequence YTEYVPHEAVSCP, from the internal region of the protein sequence according to NP_006226.2.
<b>Peptide</b>	
<b>Sequence</b>	YTEYVPHEAVSCP
<b>Purification</b>	Purified from goat serum by ammonium sulphate precipitation followed by antigen affinity chromatography
<b>Method</b>	using the immunizing peptide.
<b>Shipping</b>	
<b>Instructions</b>	Refrigerated
<b>Predicted</b>	
<b>Species</b>	Human, Mouse, Rat, Dog, Cow
<b>Reactive</b>	
<b>Species</b>	Human
<b>Human</b>	
<b>Gene ID</b>	5450
<b>Product</b>	
<b>Grade</b>	<a href="https://prod-vector-labs-pimcore-assets.s3.us-east-1.amazonaws.com/assets/products/image/elite_medium.png">https://prod-vector-labs-pimcore-assets.s3.us-east-1.amazonaws.com/assets/products/image/elite_medium.png</a>
<b>ELISA</b>	
<b>Detection</b>	Antibody detection limit dilution 1:32000.
<b>Limit</b>	
<b>Western</b>	In transfected HEK293 transiently expressing full-length Human POU2AF1 (myc and DYKDDDDK tagged), a
<b>Blot</b>	band of approx. 38kDa was observed. No bands were observed in mock-transfected HEK293 and the same band was observed using anti-DYKDDDDK tag antibody. The 38kDa was also observed in cell line Daudi. Recommended concentration, 0.3-1µg/ml.
<b>Application</b>	
<b>Type</b>	Pep-ELISA, WB

## DOCUMENTS

- [Data Sheet](#)

## GALLERY IMAGES

