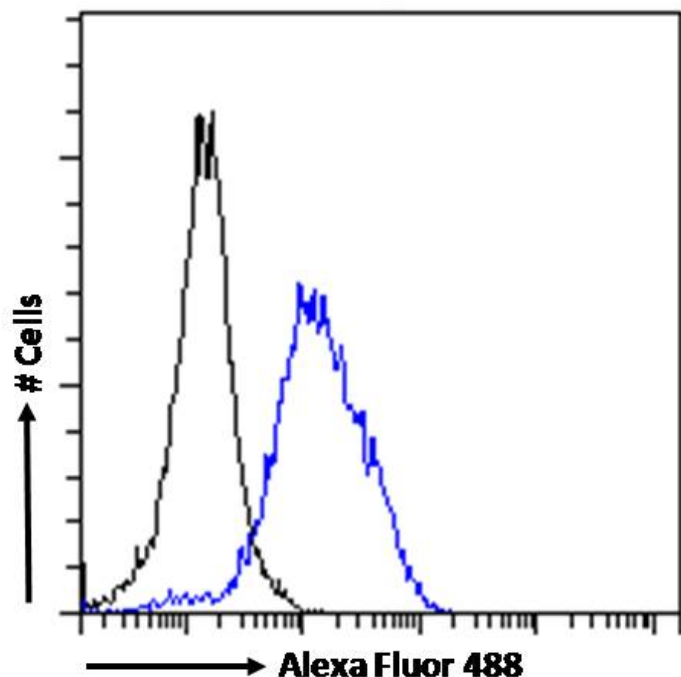


GOAT ANTI-POU3F3 / BRN1 / OCT8 ANTIBODY

SKU: EB10027



SPECIFICATIONS

Formulation Supplied at 0.5 mg/ml in Tris saline, 0.02% sodium azide, pH7.3 with 0.5% bovine serum albumin.

Unit Size 100 µg

Storage Instructions Aliquot and store at -20°C. Minimize freezing and thawing.

Synonym / Alias Names octamer-binding transcription factor 8|octamer-binding protein 8|oct-8|brn-1|brain-specific homeobox/POU domain protein 1|OTF-8|POU3F3|POU domain, class 3, transcription factor 3|POU class 3 homeobox 3|OTF8|BRN1|Brain-1

Usage Summary **Immunofluorescence:** Strong expression of the protein seen in the nuclei of Neuro-2a cells. Recommended concentration: 10µg/ml. **Flow Cytometry:** Flow cytometric analysis of Neuro-2a cells. Recommended concentration: 10ug/ml.

Accession ID NP_006227.1

Blocking Peptide EBP10027

Immunogen Peptide with sequence C-HMLSHAHQWVTAL, from the internal region of the protein sequence according to NP_006227.1.

Peptide Sequence	C-HMLSHAHQWVTAL
Purification Method	Purified from goat serum by ammonium sulphate precipitation followed by antigen affinity chromatography using the immunizing peptide.
Shipping Instructions	Refrigerated
Predicted Species	Human, Mouse, Rat
Reactive Species	Mouse
Human Gene ID	5455
Mouse Gene ID	18993
Rat Gene ID	192109
Product Grade	https://prod-vector-labs-pimcore-assets.s3.us-east-1.amazonaws.com/assets/products/image/elite_plus_medium.png
ELISA Detection Limit	Antibody detection limit dilution 1:4000.
Western Blot	Approx 48kDa band observed in Mouse Spinal Cord lysates and approx. 50kDa in Mouse Brain lysates (calculated MW of 50.3kDa according to Human NP_006227.1 and 50.2kDa according to Mouse NP_032926.2). Recommended concentration: 1-3µg/ml. Primary incubation 1 hour at room temperature.
Application Type	Pep-ELISA, WB, IF, FC

DOCUMENTS

- [Data Sheet](#)

GALLERY IMAGES

