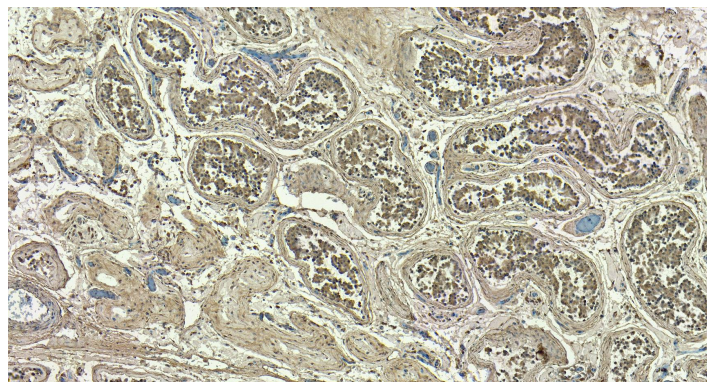


GOAT ANTI-PPP1R12A ANTIBODY

SKU: EB08594



SPECIFICATIONS

Formulation	Supplied at 0.5 mg/ml in Tris saline, 0.02% sodium azide, pH7.3 with 0.5% bovine serum albumin.
Unit Size	100 µg
Storage Instructions	Aliquot and store at -20°C. Minimize freezing and thawing.
Synonym / Alias Names	myosin phosphatase, target subunit 1 MYPT1 MGC133042 MBS protein phosphatase 1, regulatory (inhibitor) subunit 12A PPP1R12A
Usage Summary	Immunofluorescence: Strong expression of the protein seen in the cytoplasm of A431 and U2OS cells. Recommended concentration: 10µg/ml. Flow Cytometry: Flow cytometric analysis of A431 cells. Recommended concentration: 10ug/ml.
Accession ID	NP_002471.1, NP_001231919.1, NP_001231921 .1, NP_001137358.1
Blocking Peptide	EBP08594
Immunogen	Peptide with sequence C-REDEYKQKYSRTYD, from the C Terminus of the protein sequence according to NP_002471.1, NP_001231919.1, NP_001231921 .1, NP_001137358.1.
Peptide Sequence	C-REDEYKQKYSRTYD
Purification Method	Purified from goat serum by ammonium sulphate precipitation followed by antigen affinity chromatography using the immunizing peptide.
Shipping Instructions	Refrigerated
Predicted Species	Human
Reactive Species	Human

Product Grade	https://prod-vector-labs-pimcore-assets.s3.us-east-1.amazonaws.com/assets/products/image/elite_plus_medium.png
IHC Results	Paraffin embedded Human Testis. Recommended concentration: 4-5µg/ml. Preliminary testing showed positive staining of the neuronal cells and neuropils in paraffin embedded Human Cortex.
ELISA	
Detection Limit	Antibody detection limit dilution 1:8000.
Application Type	Pep-ELISA, IF, IHC, FC

DOCUMENTS

- [Data Sheet](#)

GALLERY IMAGES

