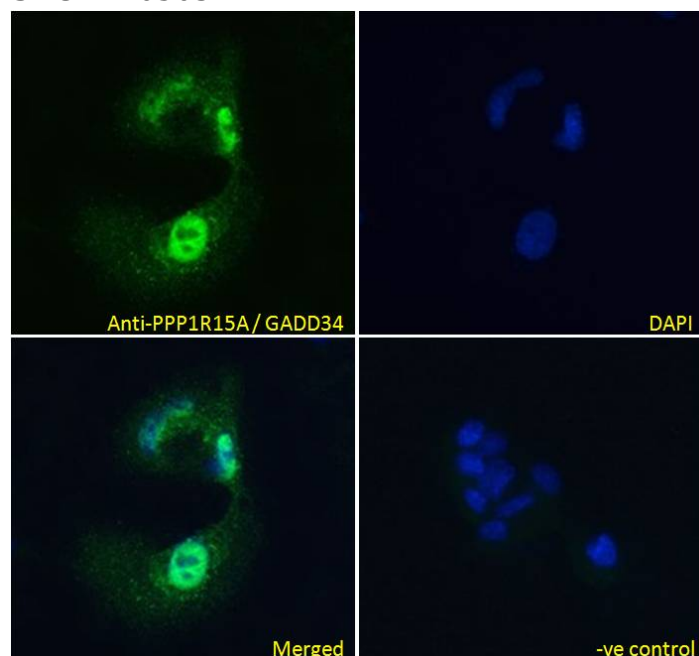


GOAT ANTI-PPP1R15A / GADD34 ANTIBODY

SKU: EB05034



SPECIFICATIONS

Formulation	Supplied at 0.5 mg/ml in Tris saline, 0.02% sodium azide, pH7.3 with 0.5% bovine serum albumin.
Unit Size	100 µg
Storage Instructions	Aliquot and store at -20°C. Minimize freezing and thawing.
Synonym / Alias Names	protein phosphatase 1, regulatory subunit 15A growth arrest and DNA-damage-inducible 34 protein phosphatase 1, regulatory (inhibitor) subunit 15A GADD34 PPP1R15A
Usage Summary	Immunofluorescence: Strong expression of the protein seen in the nuclei of HeLa and HepG2 cells. Recommended concentration: 10µg/ml. Flow Cytometry: Flow cytometric analysis of HepG2 cells. Recommended concentration: 10ug/ml.
Accession ID	NP_055145.3
Blocking Peptide	EBP05034
Immunogen	Peptide with sequence C-AAALDLSGRRG, from the C Terminus of the protein sequence according to NP_055145.3.
Peptide Sequence	C-AAALDLSGRRG

Purification Method	Purified from goat serum by ammonium sulphate precipitation followed by antigen affinity chromatography using the immunizing peptide.
Shipping Instructions	Refrigerated
Predicted Species	Human
Reactive Species	Human
Human Gene ID	23645
Product Grade	https://prod-vector-labs-pimcore-assets.s3.us-east-1.amazonaws.com/assets/products/image/elite_plus_medium.png
IHC Results	In paraffin embedded Human Liver shows cytoplasmic staining consistent with ER in the hepatocytes. Recommended concentration: 2-4µg/ml.
ELISA Detection Limit	Antibody detection limit dilution 1:128000.
Western Blot	Approx 75kDa band observed in lysates of cell line HepG2 (calculated MW of 73.4kDa according to NP_055145.2). Recommended concentration: 0.3-1µg/ml. Primary incubation 1 hour at room temperature. Negative Control: KLY (Kelly Human neuroblastoma) cell lysate.
Application Type	Pep-ELISA, WB, IHC, IF, FC

DOCUMENTS

- [Data Sheet](#)

GALLERY IMAGES

