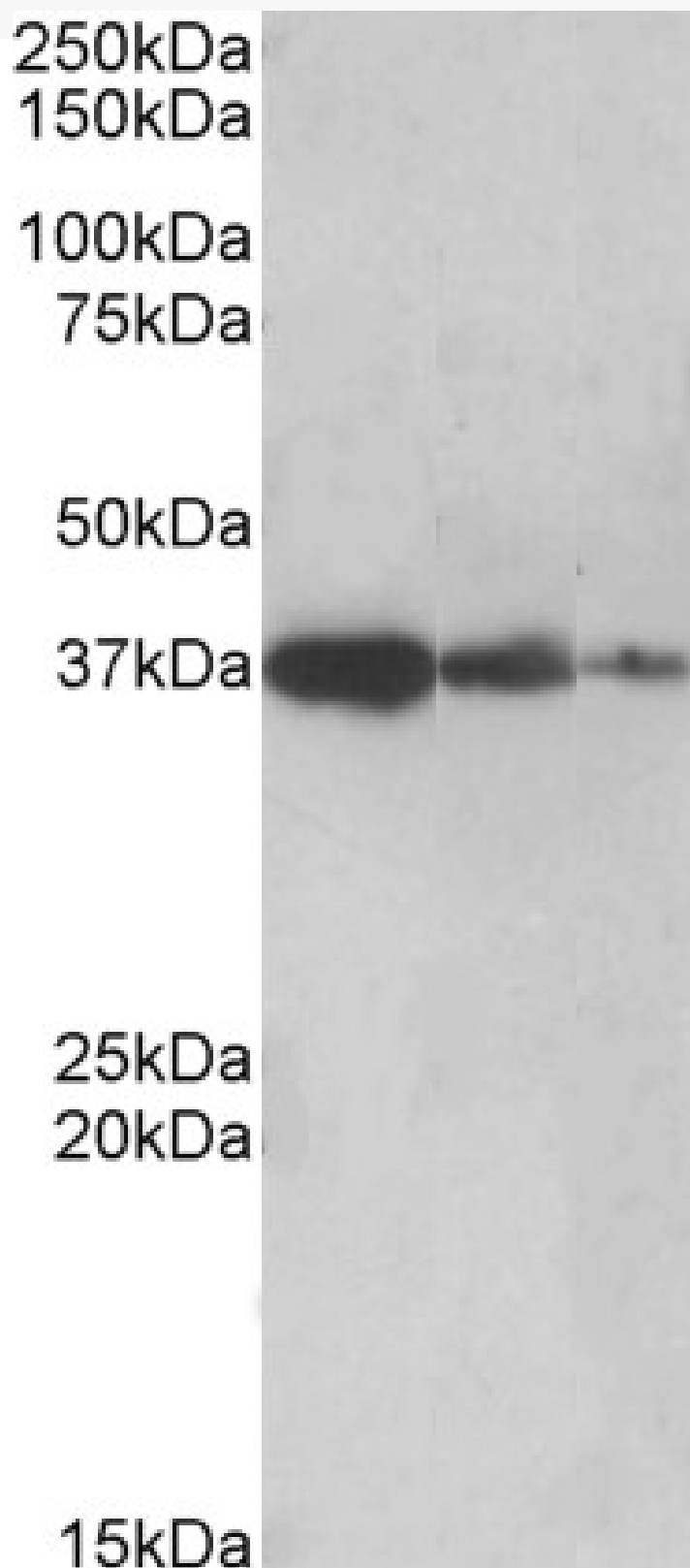


GOAT ANTI-PPP2R4 / PP2A ANTIBODY

SKU: EB09407



SPECIFICATIONS

Formulation Supplied at 0.5 mg/ml in Tris saline, 0.02% sodium azide, pH7.3 with 0.5% bovine serum albumin.

Unit Size 100 µg

Storage Instructions Aliquot and store at -20°C. Minimize freezing and thawing.

Synonym / Alias Names protein phosphatase 2A, regulatory subunit B1 (PR 53)|protein phosphatase 2A, regulatory subunit B1|phosphotyrosyl phosphatase activator|PP2A, subunit B1|PP2A phosphatase activator|OTTHUMP00000022333|PTPA|PR53|PP2A|MGC2184|protein phosphatase 2A activator, regulatory subunit 4|PPP2R4

Accession ID NP_821068.1; NP_066954.2; NP_821070.1

Blocking Peptide EBP09407

Immunogen Peptide with sequence C-GSLLPIHPVTSG, from the C Terminus of the protein sequence according to NP_821068.1; NP_066954.2; NP_821070.1.

Product Comments This antibody is expected to recognize all reported isoforms (NP_821068.1; NP_066954.2; NP_821070.1). Reported variants NP_066954.2 and NP_821067.1 represent identical protein.

Peptide Sequence C-GSLLPIHPVTSG

Purification Method Purified from goat serum by ammonium sulphate precipitation followed by antigen affinity chromatography using the immunizing peptide.

Shipping Instructions Refrigerated

Predicted Species Human, Mouse, Rat, Dog, Cow

Reactive Species Human, Mouse, Rat

Human Gene ID 5524

Mouse Gene ID 110854

Rat Gene ID 362102

Product Grade https://prod-vector-labs-pimcore-assets.s3.us-east-1.amazonaws.com/assets/products/image/elite_medium.png

IHC Results Paraffin embedded Human Testis. Recommended concentration: 3.75µg/ml.

ELISA Detection Limit Antibody detection limit dilution 1:32000.

Western Blot Approx 37kDa band observed in Human, Mouse and Rat Liver lysates and in lysates of cell line HepG2 (calculated MW of 36.8kDa according to NP_066954.2). Recommended concentration: 0.5-2µg/ml. Primary incubation was 1 hour.

Application Type Pep-ELISA, WB, IHC

DOCUMENTS

- [Data Sheet](#)

GALLERY IMAGES

