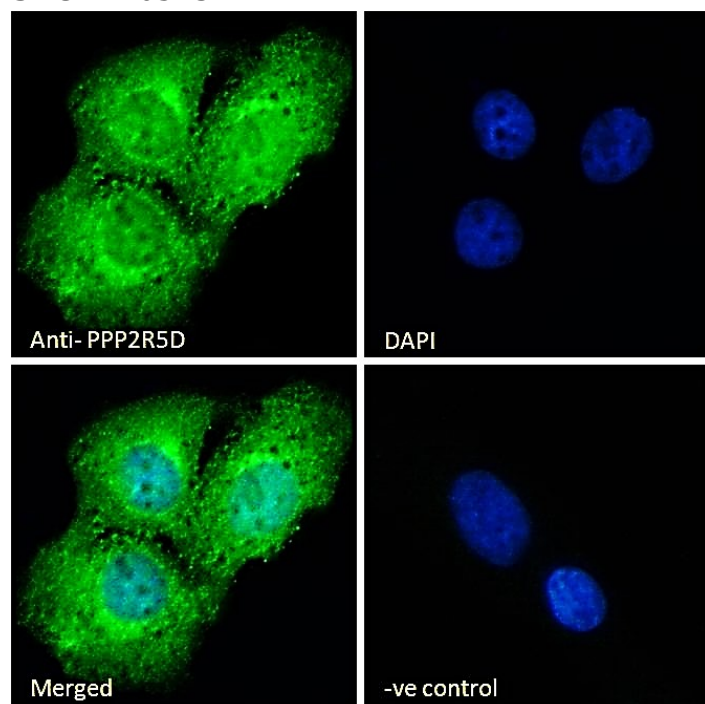


GOAT ANTI-PPP2R5D ANTIBODY

SKU: EB05232



SPECIFICATIONS

Formulation Supplied at 0.5 mg/ml in Tris saline, 0.02% sodium azide, pH7.3 with 0.5% bovine serum albumin.

Unit Size 100 µg

Storage Instructions Aliquot and store at -20°C. Minimize freezing and thawing.

Synonym / Alias Names serine/threonine-protein phosphatase 2A 56 kDa regulatory subunit delta isoform|delta isoform of regulatory subunit B56, protein phosphatase 2A|B56D|protein phosphatase 2, regulatory subunit B\1, delta isoform|Serine/threonine protein phosphatase 2A, 56 kDa regulatory subunit, delta isoform|PP2A, B subunit, PR61 delta isoform|PP2A, B subunit, B56 delta isoform|PP2A, B subunit, R5 delta isoform|PP2A, B subunit, B\1 delta isoform|protein phosphatase 2, regulatory subunit B (B56), delta isoform|MGC8949|MGC2134|PPP2R5D

Usage Summary **Immunofluorescence:** Strong expression of the protein seen in the cytoplasm and nuclei of U2OS cells. Recommended concentration: 10µg/ml. **Flow Cytometry:** Flow cytometric analysis of A431 cells. Recommended concentration: 10ug/ml.

Accession ID NP_006236.1; NP_851307.1; NP_851308.1; NP_001257405.1

Blocking Peptide EBP05232

Immunogen	Peptide with sequence C-KRAEEFLTASQEAL, from the C Terminus of the protein sequence according to NP_006236.1; NP_851307.1; NP_851308.1; NP_001257405.1.
Product	This antibody is expected to recognise reported isoforms (NP_006236.1 (iso 1); NP_851307.1; (iso 2) NP_851308.1)
Comments	(iso 3) and NP_001257405.1 (iso 4).
Peptide Sequence	C-KRAEEFLTASQEAL
Purification Method	Purified from goat serum by ammonium sulphate precipitation followed by antigen affinity chromatography using the immunizing peptide.
Shipping Instructions	Refrigerated
Predicted Species	Human, Mouse, Rat, Dog, Pig, Cow
Reactive Species	Human, Mouse, Rat
Human Gene ID	5528
Product Grade	https://prod-vector-labs-pimcore-assets.s3.us-east-1.amazonaws.com/assets/products/image/elite_plus_medium.png
ELISA Detection Limit	Antibody detection limit dilution 1:20000.
Western Blot	Approx 70kDa band observed in lysates of cell lines A431, HepG2 and Jurkat, and in Human Cerebellum lysates, approx. 65-70kDa in lysates of cell line NIH3T3, and approx.75kDa in Rat Brain lysates, (calculated MW of 70kDa according to Human NP_006236.1, 69.0kDa according to Mouse NP_033384.2 and 77.8kDa according to Rat XP_017452220.1). Recommended concentration: 0.03-0.3µg/ml. Primary incubation 1 hour at room temperature.
Application Type	Pep-ELISA, WB, IF, FC

DOCUMENTS

- [Data Sheet](#)

GALLERY IMAGES

