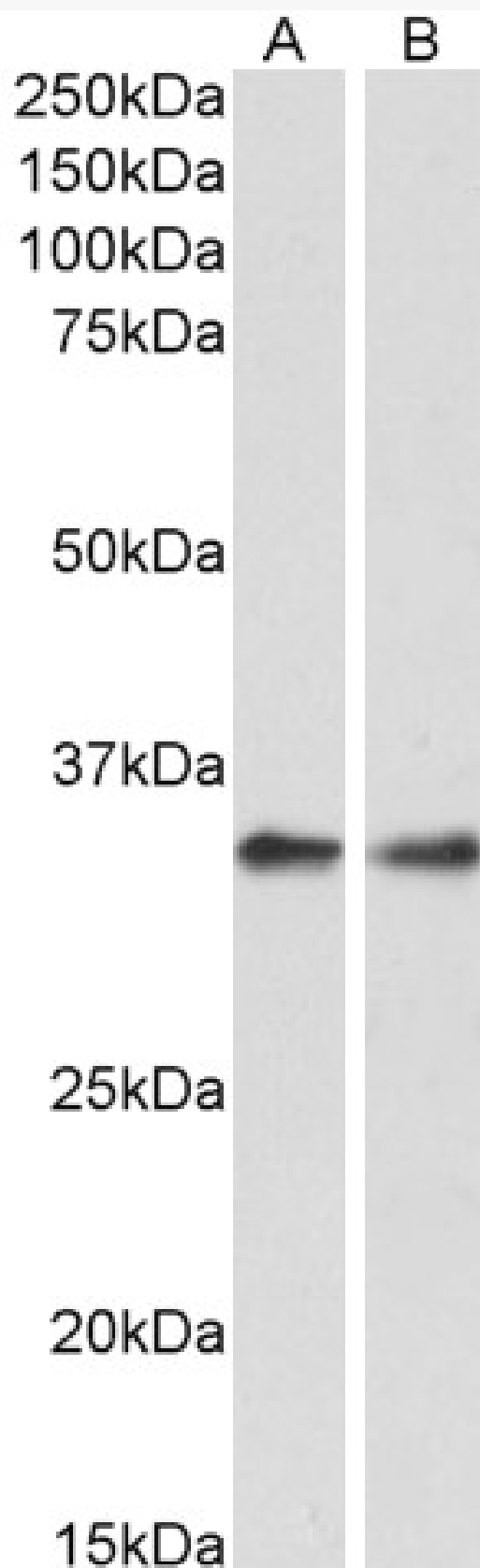


GOAT ANTI-PPP4C ANTIBODY

SKU: EB09395



SPECIFICATIONS

Formulation	Supplied at 0.5 mg/ml in Tris saline, 0.02% sodium azide, pH7.3 with 0.5% bovine serum albumin.
Unit Size	100 µg
Storage Instructions	Aliquot and store at -20°C. Minimize freezing and thawing.
Synonym / Alias Names	Protein phosphatase 4, catalytic subunit PPX PPH3 PP4 protein phosphatase 4 (formerly X), catalytic subunit PPP4C
Accession ID	NP_002711.1
Blocking Peptide	EBP09395
Immunogen	Peptide with sequence C-PQETRGIPSKKP, from the C Terminus of the protein sequence according to NP_002711.1.
Peptide Sequence	C-PQETRGIPSKKP
Purification Method	Purified from goat serum by ammonium sulphate precipitation followed by antigen affinity chromatography using the immunizing peptide.
Shipping Instructions	Refrigerated
Predicted Species	Human, Rat, Dog
Reactive Species	Human, Rat
Human Gene ID	5531
Rat Gene ID	171366
Product Grade	https://prod-vector-labs-pimcore-assets.s3.us-east-1.amazonaws.com/assets/products/image/elite_medium.png
IHC Results	In paraffin embedded Human Prostate shows nuclear staining of secretory cells in the gland. Recommended concentration, 2-4µg/ml.
ELISA Detection Limit	Antibody detection limit dilution 1:16000.
Western Blot	Approx 35kDa band observed in HEK293, A431 and HeLa lysates and in Rat Spleen and Lung lysates (calculated MW of 35.1kDa according to NP_002711.1). Recommended concentration: 0.1-0.3µg/ml.
Application Type	Pep-ELISA, WB, IHC

DOCUMENTS

- [Data Sheet](#)

GALLERY IMAGES

