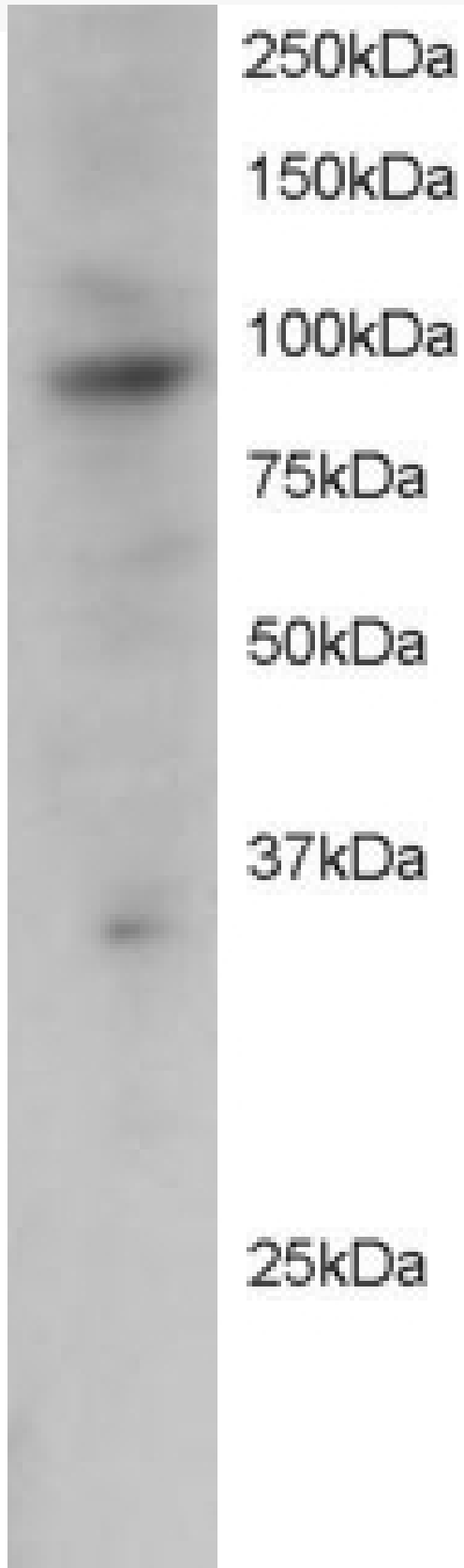


GOAT ANTI-PRAM1 ANTIBODY

SKU: EB05159



SPECIFICATIONS

Formulation	Supplied at 0.5 mg/ml in Tris saline, 0.02% sodium azide, pH7.3 with 0.5% bovine serum albumin.
Unit Size	100 µg
Storage Instructions	Aliquot and store at -20°C. Minimize freezing and thawing.
Synonym / Alias Names	PRAM-1 PRAM-1 protein PML-RARA target gene encoding an Adaptor Molecule-1 PML-RARA regulated adaptor molecule 1 MGC39864 PML-RAR
Accession ID	NP_115528.4
Blocking Peptide	EBP05159
Immunogen	Peptide with sequence DFCDPLENQPLPLGR, from the C Terminus of the protein sequence according to NP_115528.4.
Peptide Sequence	DFCDPLENQPLPLGR
Purification Method	Purified from goat serum by ammonium sulphate precipitation followed by antigen affinity chromatography using the immunizing peptide.
Shipping Instructions	Refrigerated
Predicted Species	Human, Pig
Reactive Species	Human
Human Gene ID	84106
Product Grade	https://prod-vector-labs-pimcore-assets.s3.us-east-1.amazonaws.com/assets/products/image/elite_medium.png
ELISA Detection Limit	Antibody detection limit dilution 1:8000.
Western Blot	Approx 90-100kDa band seen in Jurkat cell lysates. Recommended for use at 1-3µg/ml. Overnight incubation is recommended with this antibody. Please note that although the predicted MW of PRAM-1 is 79kDa, Moog-Lutz et al., (J. Biol. Chem, Jun 2001; 276: 22375 - 22381) detected aPRAM-1 migrating with an apparent molecular mass of 97 kDa and this is what we observed as well.
Application Type	Pep-ELISA, WB

DOCUMENTS

- [Data Sheet](#)

GALLERY IMAGES

