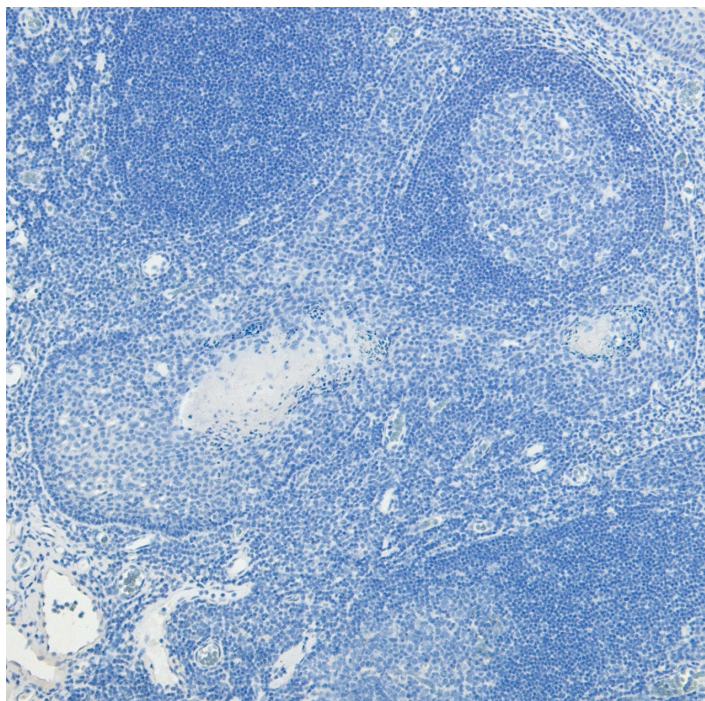


GOAT ANTI-PRDM1 / BLIMP1 ANTIBODY

SKU: EB05710



SPECIFICATIONS

Formulation Supplied at 0.5 mg/ml in Tris saline, 0.02% sodium azide, pH7.3 with 0.5% bovine serum albumin.

Unit Size 100 µg

Storage Instructions Aliquot and store at -20°C. Minimize freezing and thawing.

Synonym / Alias Names positive regulatory domain I-binding factor 1|beta-interferon gene positive-regulatory domain I binding factor|PRDI-binding factor-1|PR-domain zinc finger protein 1|PR domain containing 1, with ZNF domain, isoform 2|B-lymphocyte-induced maturation protein 1|PRDI-BF1|MGC118925|MGC118924|MGC118923|MGC118922|BLIMP1|RP1-134E15.1|PR domain containing 1, with ZNF domain|PRDM1

Usage Summary Immunofluorescence: Strong expression of the protein seen in the nucleus and plasma membrane of U251 cells. Recommended concentration: 10µg/ml.

Accession ID NP_001189.2; NP_878911.1

Blocking Peptide EBP05710

Immunogen	Peptide with sequence C-KVKQETVEPMDP, from the C Terminus of the protein sequence according to NP_001189.2; NP_878911.1.
Product Comments	This antibody is expected to recognize both reported isoforms (NP_001189.2 and NP_878911.1).
Peptide Sequence	C-KVKQETVEPMDP
Purification Method	Purified from goat serum by ammonium sulphate precipitation followed by antigen affinity chromatography using the immunizing peptide.
Shipping Instructions	Refrigerated
Predicted Species	Human, Mouse, Rat, Dog, Pig, Cow
Reactive Species	Human
Human Gene ID	639
Mouse Gene ID	12142
Product Grade	https://prod-vector-labs-pimcore-assets.s3.us-east-1.amazonaws.com/assets/products/image/elite_medium.png
IHC Results	Paraffin embedded Human Tonsil. Recommended concentration: 5-6µg/ml.
ELISA	
Detection Limit	Antibody detection limit dilution 1:2000.
Application Type	Pep-ELISA, IF, IHC

DOCUMENTS

- [Data Sheet](#)

GALLERY IMAGES

