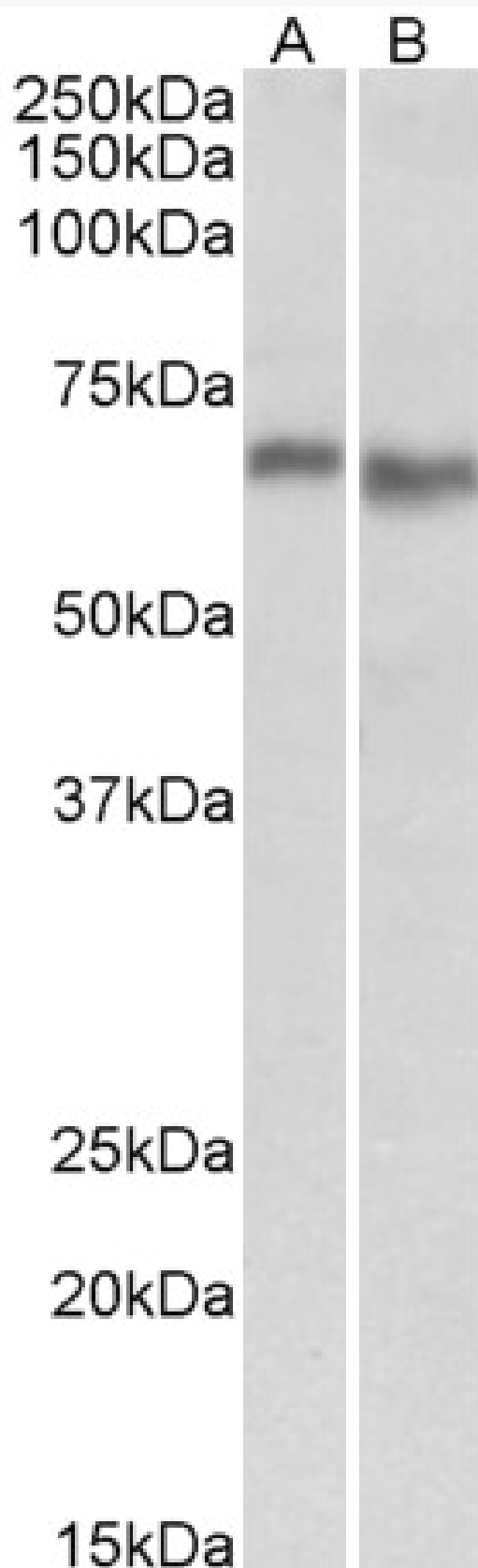


GOAT ANTI-PRKAA2 ANTIBODY

SKU: EB10269



SPECIFICATIONS

| | |
|------------------------------|---|
| Formulation | Supplied at 0.5 mg/ml in Tris saline, 0.02% sodium azide, pH7.3 with 0.5% bovine serum albumin. |
| Unit Size | 100 µg |
| Storage Instructions | Aliquot and store at -20°C. Minimize freezing and thawing. |
| Synonym / Alias Names | PRKAA2 protein kinase, AMP-activated, alpha 2 catalytic subunit PRKAA AMPK-alpha-2 chain AMPK2 AMPK AMP-activated protein kinase alpha 2 catalytic subunit 5'-AMP-activated protein kinase, catalytic alpha-2 chain |
| Accession ID | NP_006243.2 |
| Blocking Peptide | EBP10269 |
| Immunogen | Peptide with sequence CPLDALNTTKP, from the internal region of the protein sequence according to NP_006243.2. |
| Peptide Sequence | CPLDALNTTKP |
| Purification Method | Purified from goat serum by ammonium sulphate precipitation followed by antigen affinity chromatography using the immunizing peptide. |
| Shipping Instructions | Refrigerated |
| Predicted Species | Human, Mouse, Rat, Dog, Pig, Cow |
| Reactive Species | Human, Mouse, Rat |
| Human Gene ID | 5563 |
| Mouse Gene ID | 108079 |
| Rat Gene ID | 78975 |
| Product Grade | https://prod-vector-labs-pimcore-assets.s3.us-east-1.amazonaws.com/assets/products/image/elite_medium.png |
| ELISA Detection Limit | Antibody detection limit dilution 1:16000. |
| Western Blot | Approx 65kDa band observed in Human Heart and Liver lysates and in Mouse and Rat Heart lysates (calculated MW of 62.3kDa according to NP_006243.2). Recommended concentration: 0.3-1µg/ml. Primary incubation was 1 hour. |
| Application Type | Pep-ELISA, WB |

DOCUMENTS

- [Data Sheet](#)

GALLERY IMAGES

