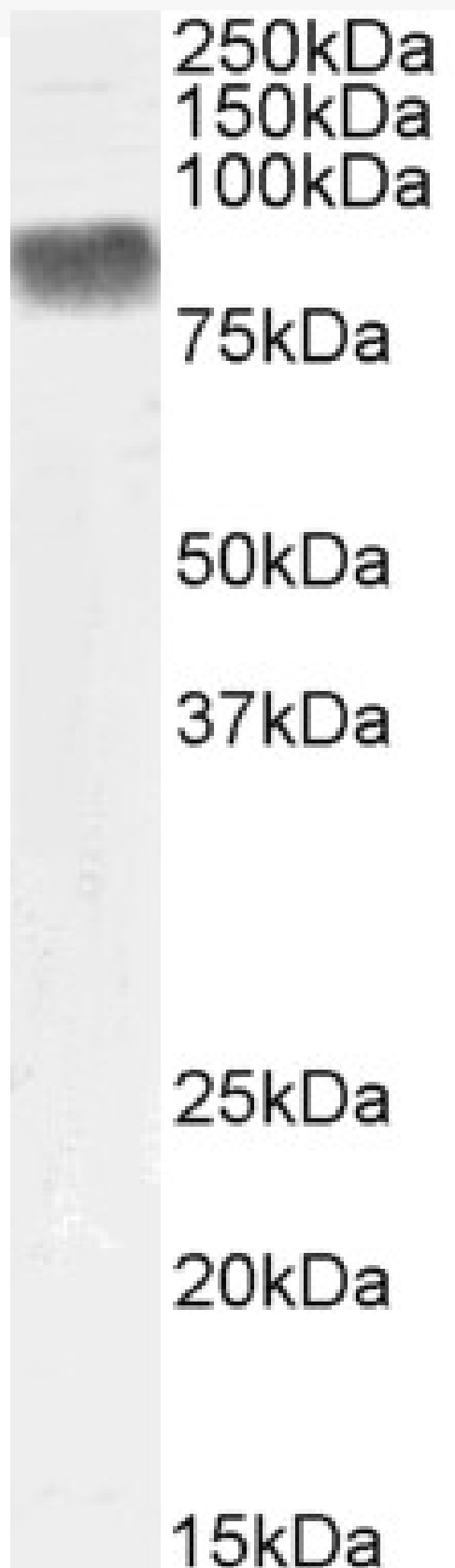


# GOAT ANTI-PRKCB, BIOTINYLATED ANTIBODY

**SKU:** EB11585-B



## SPECIFICATIONS

<b>Formulation</b>	Supplied at 0.5 mg/ml in Tris saline, 0.02% sodium azide, pH7.3 with 0.5% bovine serum albumin.
<b>Unit Size</b>	100 µg
<b>Storage</b>	
<b>Instructions</b>	Aliquot and store at -20°C. Minimize freezing and thawing.
<b>Synonym / Alias</b>	MGC41878 OTTHUMP00000162377 OTTHUMP00000162378 PKCB PKC-B PKC-beta PRKCB PRKCB1 PRKCB2 protein kinase C beta type protein kinase C, beta protein kinase C, beta 1 polypeptide
<b>Accession ID</b>	NP_997700.1
<b>Blocking Peptide</b>	EBP11585-B
<b>Immunogen</b>	Peptide with sequence C-DKEFTRQPVELT., from the internal region (near C terminus) of the protein sequence according to NP_997700.1.
<b>Product Comments</b>	This antibody is expected to recognize isoform 1 (NP_997700.1) only.
<b>Peptide Sequence</b>	C-DKEFTRQPVELT.
<b>Purification Method</b>	Purified from goat serum by ammonium sulphate precipitation followed by antigen affinity chromatography using the immunizing peptide.
<b>Shipping Instructions</b>	Refrigerated
<b>Predicted Species</b>	Human, Rat, Dog
<b>Reactive Species</b>	Human
<b>Human Gene ID</b>	5579
<b>Product Grade</b>	<a href="https://prod-vector-labs-pimcore-assets.s3.us-east-1.amazonaws.com/assets/products/image/elite_medium.png">https://prod-vector-labs-pimcore-assets.s3.us-east-1.amazonaws.com/assets/products/image/elite_medium.png</a>
<b>ELISA</b>	
<b>Detection Limit</b>	Antibody detection limit dilution 1:128000.
<b>Western Blot</b>	Approx 80kDa band observed in lysates of Human Placenta (calculated MW of 76.9kDa according to NP_997700.1). Recommended concentration: 0.1-0.3µg/ml.
<b>Application Type</b>	Pep-ELISA, WB

## DOCUMENTS

- [Data Sheet](#)

## GALLERY IMAGES

