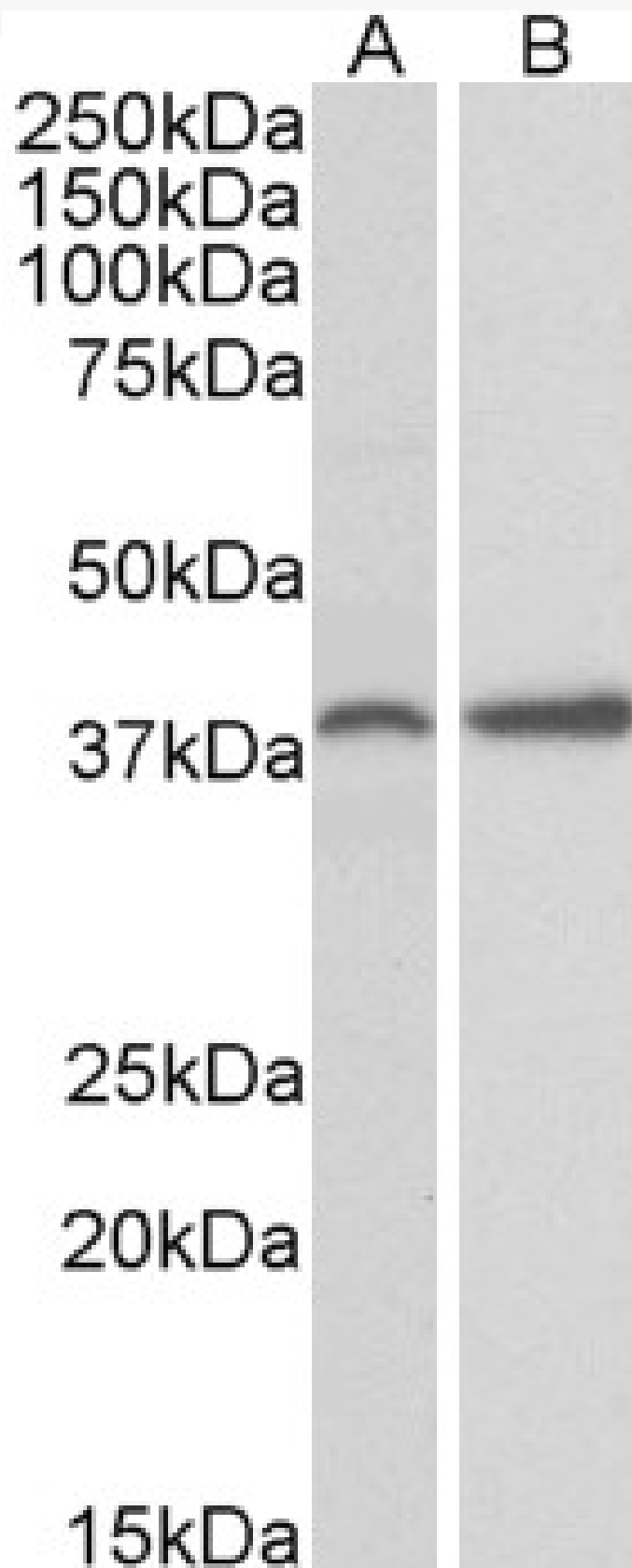


GOAT ANTI-PRKCDBP ANTIBODY

SKU: EB09572



SPECIFICATIONS

Formulation Supplied at 0.5 mg/ml in Tris saline, 0.02% sodium azide, pH7.3 with 0.5% bovine serum albumin.

Unit Size 100 µg

Storage Instructions Aliquot and store at -20°C. Minimize freezing and thawing.

Synonym / Alias Names sdr-related gene product that binds to c-kinase|SRBC|MGC20400|HSRBC|protein kinase C, delta binding protein|PRKCDBP

Accession ID NP_659477.2

Blocking Peptide EBP09572

Immunogen Peptide with sequence C-RRTGLQKVQSLR, from the internal region of the protein sequence according to NP_659477.2.

Peptide Sequence C-RRTGLQKVQSLR

Purification Method Purified from goat serum by ammonium sulphate precipitation followed by antigen affinity chromatography using the immunizing peptide.

Shipping Instructions Refrigerated

Predicted Species Human, Mouse, Rat, Dog, Cow

Reactive Species Human, Mouse, Rat

Human Gene ID 112464

Mouse Gene ID 109042

Rat Gene ID 85332

Product Grade https://prod-vector-labs-pimcore-assets.s3.us-east-1.amazonaws.com/assets/products/image/elite_medium.png

IHC Results Paraffin embedded Human Uterus. Recommended concentration: 3.75µg/ml.

ELISA Detection Limit Antibody detection limit dilution 1:32000.

Western Blot Approx 38kDa band observed in Human Adipose, in Mouse Ovary and Rat Uterus and in NIH3T3 lysates (calculated MW of 27.7kDa according to Human NP_659477.2, of 27.8kDa according to Mouse NP_082720.1 and of 27.9kDa according to Rat NP_604444.1). The observed molecular weight corresponds to earlier findings in literature with different antibodies (Bastiani M, J Cell Biol. 2009 Jun 29;185(7):1259-73. PMID: 19546242). Recommended concentration: 0.1-1µg/ml. Primary incubation was 1 hour.

Application Type Pep-ELISA, WB, IHC

DOCUMENTS

- [Data Sheet](#)

GALLERY IMAGES

