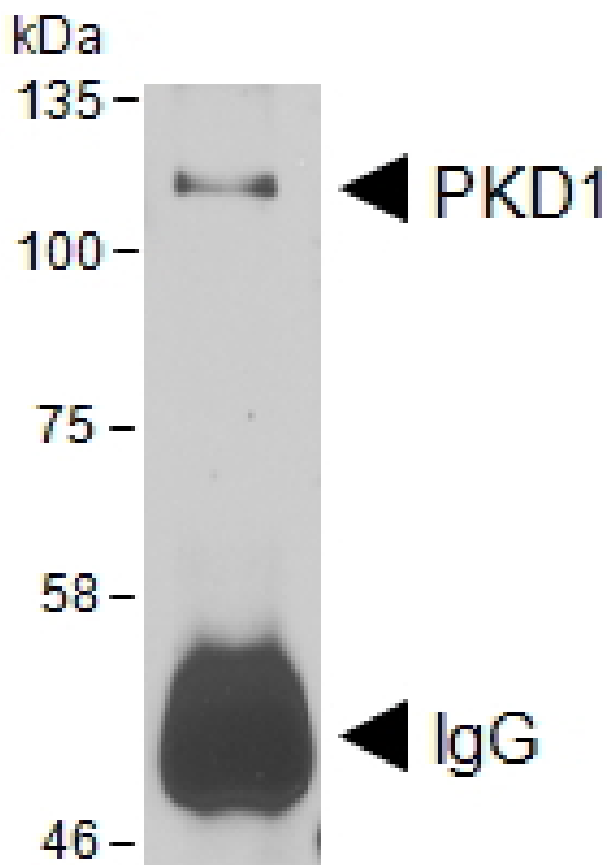


GOAT ANTI-PRKD1 (AA383-395) ANTIBODY

SKU: EB12886



SPECIFICATIONS

Formulation Supplied at 0.5 mg/ml in Tris saline, 0.02% sodium azide, pH7.3 with 0.5% bovine serum albumin.

Unit Size 100 µg

Storage Instructions Aliquot and store at -20°C. Minimize freezing and thawing.

Synonym /

Alias PRKCM;|PKD|PKCM|PKC-MU|PRKD1

Names

Usage	Immunoprecipitation: PKD1 was immunoprecipitated from Hek293T cells (as above).
Summary	Immunoprecipitates were analyzed by Western Blot probed with the same antibody.
Accession ID	NP_002733.2
Blocking Peptide	EBP12886
Immunogen	Peptide with sequence C-QDPDPDHEDANRT, from the internal region of the protein sequence according to NP_002733.2.
Peptide Sequence	C-QDPDPDHEDANRT
Purification Method	Purified from goat serum by ammonium sulphate precipitation followed by antigen affinity chromatography using the immunizing peptide.
Shipping Instructions	Refrigerated
Predicted Species	Human
Reactive Species	Human
Human Gene ID	5587
Product Grade	https://prod-vector-labs-pimcore-assets.s3.us-east-1.amazonaws.com/assets/products/image/elite_medium.png
ELISA Detection Limit	Antibody detection limit dilution 1:8000.
Western Blot	In transfected HEK293 transiently expressing Human PKD1 (DYKDDDDK tagged), a band of approx. 100kDa is observed. The same band is observed using anti- DYKDDDDK antibody and no bands are observed in cells transiently expressing Human PKD2 or PKD3. Recommended concentration 0.1-0.3ug/ml
Application Type	Pep-ELISA, WB-Trf, IP

DOCUMENTS

- [Data Sheet](#)

GALLERY IMAGES

