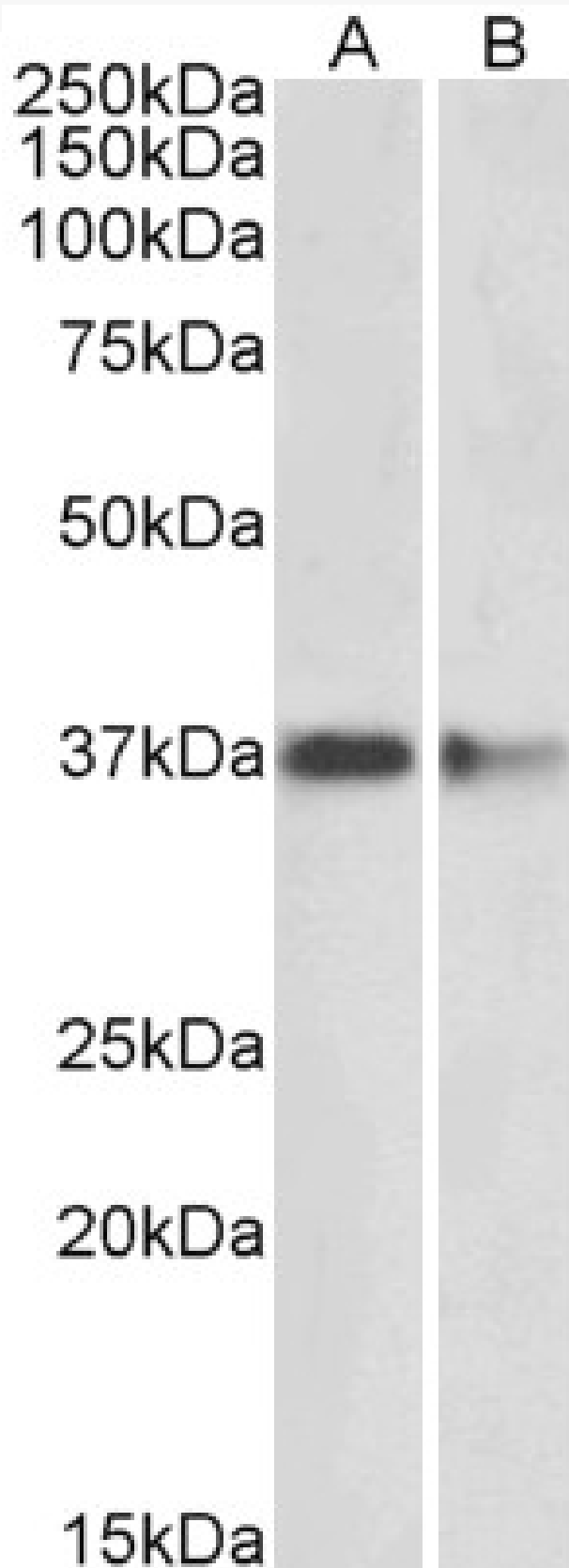


GOAT ANTI-PRMT2 ANTIBODY

SKU: EB11558



SPECIFICATIONS

Formulation	Supplied at 0.5 mg/ml in Tris saline, 0.02% sodium azide, pH7.3 with 0.5% bovine serum albumin.
Unit Size	100 µg
Storage Instructions	Aliquot and store at -20°C. Minimize freezing and thawing.
Synonym / Alias	histone-arginine N-methyltransferase PRMT2 HMT1 (hnRNP methyltransferase, S. cerevisiae)-like 1 HMT1 hnRNP methyltransferase-like 1 HRMT1L1 MGC111373 OTTHUMP00000046525 OTTHUMP00000046526 OTTHUMP00000115881 OTTHUMP00000115882 OTTHUMP00000115884 OTTHUMP00000207831 PRMT2 PRMT2
Names	alpha PRMT2 beta PRMT2 gamma protein arginine methyltransferase 2 protein arginine N-methyltransferase 2
Accession ID	NP_001526.2; NP_001229793.1; NP_001229794.1; NP_001229795.1
Blocking Peptide	EBP11558
Immunogen	Peptide with sequence C-DQPRTTYHVSILQ, from the internal region of the protein sequence according to NP_001526.2; NP_001229793.1; NP_001229794.1; NP_001229795.1.
Product Comments	This antibody is expected to recognize all reported isoforms (NP_001526.2; NP_001229793.1; NP_001229794.1; NP_001229795.1). Reported variants represent identical protein: NP_001526.2, NP_996845.1
Peptide Sequence	C-DQPRTTYHVSILQ
Purification Method	Purified from goat serum by ammonium sulphate precipitation followed by antigen affinity chromatography using the immunizing peptide.
Shipping Instructions	Refrigerated
Predicted Species	Human, Mouse, Rat, Pig, Cow
Reactive Species	Human, Mouse, Rat, Pig
Human Gene ID	3275
Mouse Gene ID	15468
Rat Gene ID	499420
Product Grade	https://prod-vector-labs-pimcore-assets.s3.us-east-1.amazonaws.com/assets/products/image/elite_medium.png
ELISA Detection Limit	Antibody detection limit dilution 1:64000.
Western Blot	Approx 37kDa band observed in lysates of cell line HeLa and in rodent Brain lysates (calculated MW of 37.2kDa according to NP_001229793.1). Approx 35kDa band observed in Pig Brain lysates (calculated MW of 38.7kDa according to XP_005658963.1). Recommended concentration: 1-3µg/ml.
Application Type	Pep-ELISA, WB

DOCUMENTS

- [Data Sheet](#)

GALLERY IMAGES

