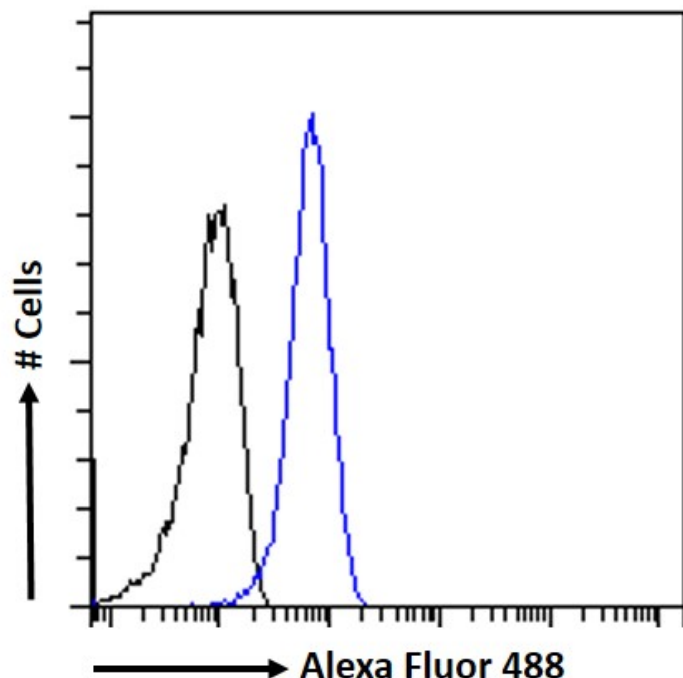


GOAT ANTI-PRMT5 ANTIBODY

SKU: EB09534



SPECIFICATIONS

Formulation Supplied at 0.5 mg/ml in Tris saline, 0.02% sodium azide, pH7.3 with 0.5% bovine serum albumin.

Unit Size 100 µg

Storage Instructions Aliquot and store at -20°C. Minimize freezing and thawing.

Synonym / Alias Names SKB1 homolog|HMT1 hnRNP methyltransferase-like 5|SKB1Hs|SKB1|JBP1|IBP72|HRMT1L5|protein arginine methyltransferase 5|PRMT5

Usage Summary **Immunofluorescence:** Strong expression of the protein seen in A431 and U2OS cells. Recommended concentration: 10µg/ml. **Flow Cytometry:** Flow cytometric analysis of A431 cells. Recommended concentration: 10ug/ml.

Accession ID NP_006100.2; NP_001034708.1; NP_001269882.1; NP_001269883.1; NP_001269884.1; NP_001269885.1

Blocking Peptide EBP09534

Immunogen	Peptide with sequence RACREKDRDPEAQ, from the internal region of the protein sequence according to NP_006100.2; NP_001034708.1; NP_001269882.1; NP_001269883.1; NP_001269884.1; NP_001269885.1.
Product Comments	This antibody is expected to recognize both isoforms (NP_006100.2; NP_001034708.1).
Peptide Sequence	RACREKDRDPEAQ
Purification Method	Purified from goat serum by ammonium sulphate precipitation followed by antigen affinity chromatography using the immunizing peptide.
Shipping Instructions	Refrigerated
Predicted Species	Human, Mouse, Rat, Cow
Reactive Species	Human
Human Gene ID	10419
Mouse Gene ID	27374
Rat Gene ID	364382
Product Grade	https://prod-vector-labs-pimcore-assets.s3.us-east-1.amazonaws.com/assets/products/image/elite_medium.png
ELISA Detection Limit	Antibody detection limit dilution 1:16000.
Western Blot	Preliminary testing showed a band at approx. 70kDa in A431 and HepG2 nuclear cell lysate after 1-2ug/ml antibody staining. (calculated MW of 72.7kDa according to NP_006100.2). Primary incubation 1 hour at room temperature
Application Type	Pep-ELISA, IF, FC

DOCUMENTS

- [Data Sheet](#)

GALLERY IMAGES

