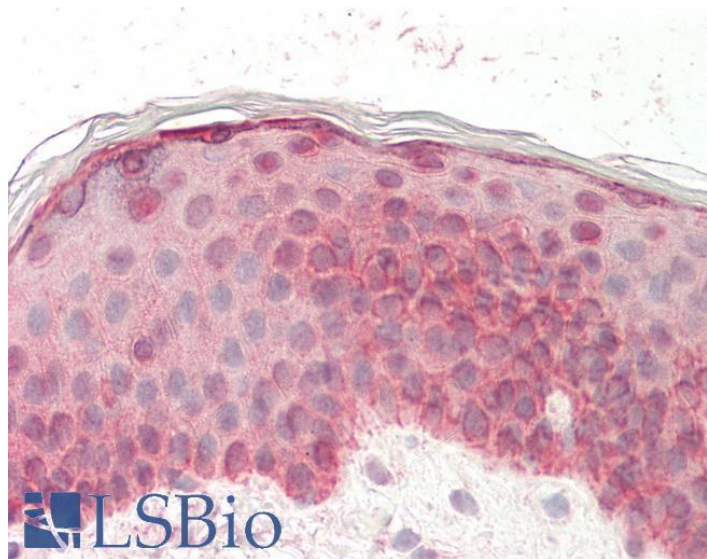


GOAT ANTI-PRO-EGF ANTIBODY

SKU: EB11752



SPECIFICATIONS

Formulation Supplied at 0.5 mg/ml in Tris saline, 0.02% sodium azide, pH7.3 with 0.5% bovine serum albumin.

Unit Size 100 µg

Storage Instructions Aliquot and store at -20°C. Minimize freezing and thawing.

Synonym / URG|pro-epidermal growth

Alias factor|OTTHUMP00000219722|OTTHUMP00000219721|OTTHUMP00000162922|HOMG4|epidermal growth

Names factor|EGF|beta-urogastrone

Accession ID NP_001954.2; NP_001171601.1; NP_001171602.1

Blocking Peptide EBP11752

Immunogen Peptide with sequence SRQERVCNIEKNVS, from the internal region (near the N terminus) of the protein sequence according to NP_001954.2; NP_001171601.1; NP_001171602.1.

Product Comments This antibody is expected to recognize all reported isoforms (NP_001954.2; NP_001171601.1; NP_001171602.1), but not the mature form. The immunizing peptide represents part of the extracellular domain.

Peptide Sequence SRQERVCNIEKNVS

Purification Method	Purified from goat serum by ammonium sulphate precipitation followed by antigen affinity chromatography using the immunizing peptide.
Shipping Instructions	Refrigerated
Predicted Species	Human, Dog
Reactive Species	Human
Human Gene ID	1950
Product Grade	https://prod-vector-labs-pimcore-assets.s3.us-east-1.amazonaws.com/assets/products/image/elite_medium.png
IHC Results	Paraffin embedded Human Skin. Recommended concentration: 5µg/ml.
ELISA Detection Limit	Antibody detection limit dilution 1:128000.
Western Blot	Approx 160kDa double band observed in Human Prostate lysates (calculated MW of 134kDa according to NP_001954.2). The two bands represent glycosylated forms of the mature protein. Recommended concentration: 1-3µg/ml. Primary incubation was 1 hour.
Application Type	Pep-ELISA, WB, IHC

DOCUMENTS

- [Data Sheet](#)

GALLERY IMAGES

