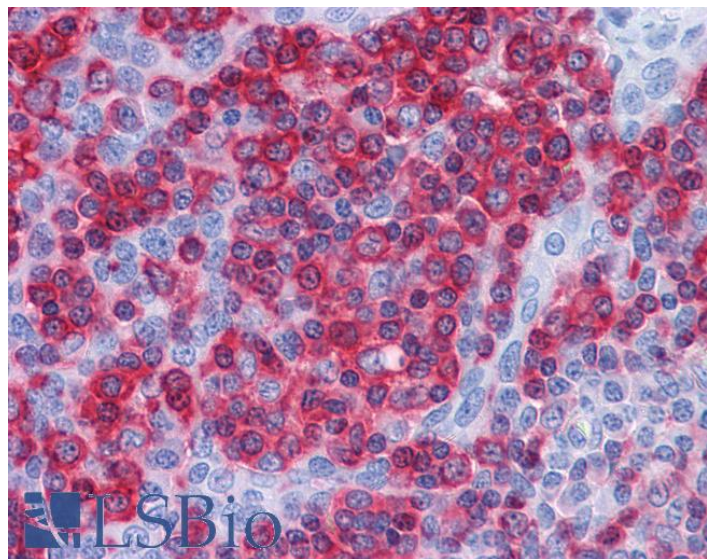


GOAT ANTI-PROLYL ENDOPEPTIDASE / PREP ANTIBODY

SKU: EB07251



SPECIFICATIONS

Formulation Supplied at 0.5 mg/ml in Tris saline, 0.02% sodium azide, pH7.3 with 0.5% bovine serum albumin.

Unit Size 100 µg

Storage Instructions Aliquot and store at -20°C. Minimize freezing and thawing.

Synonym / Alias Names PREP|prolyl endopeptidase|HGNC:9358|MGC16060|PE|PEP|OTTHUMP00000040498|dj355L5.1 (prolyl endopeptidase)|post-proline cleaving enzyme

Accession ID NP_002717.3

Blocking Peptide EBP07251

Immunogen Peptide with sequence C-QYIVGRSRKQSNP, from the internal region of the protein sequence according to NP_002717.3.

Peptide Sequence C-QYIVGRSRKQSNP

Purification Method Purified from goat serum by ammonium sulphate precipitation followed by antigen affinity chromatography using the immunizing peptide.

Shipping Instructions Refrigerated

Predicted Species	Human, Mouse, Rat, Dog, Pig, Cow
Reactive Species	Human
Human Gene ID	5550
Mouse Gene ID	19072
Rat Gene ID	83471
Product Grade	https://prod-vector-labs-pimcore-assets.s3.us-east-1.amazonaws.com/assets/products/image/elite_medium.png
IHC Results	Paraffin embedded Human Kidney and Tonsil. Recommended concentration: 3.75µg/ml.
ELISA	
Detection Limit	Antibody detection limit dilution 1:16000.
Western Blot	Preliminary experiments gave an approx 45kDa band in Human Brain, Lymph Node, Spleen and Testis lysates after 0.3µg/ml antibody staining. Please note that currently we cannot find an explanation in the literature for the band we observe given the calculated size of 80.7kDa according to NP_002717.3. The 45kDa band was successfully blocked by incubation with the immunizing peptide.
Application Type	Pep-ELISA, IHC

DOCUMENTS

- [Data Sheet](#)

GALLERY IMAGES

