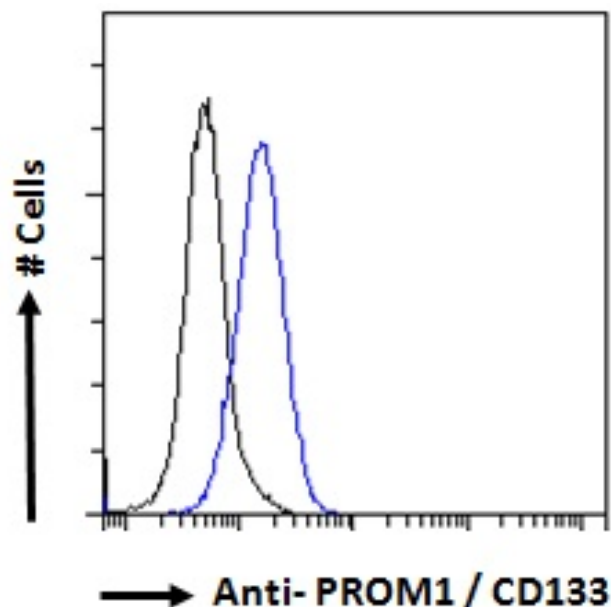


GOAT ANTI-PROM1 / CD133 (AA310-322) ANTIBODY

SKU: EB11822



SPECIFICATIONS

Formulation Supplied at 0.5 mg/ml in Tris saline, 0.02% sodium azide, pH7.3 with 0.5% bovine serum albumin.

Unit Size 100 µg

Storage Instructions Aliquot and store at -20°C. Minimize freezing and thawing.

Synonym / Alias Names STGD4|RP41|PROML1|prominin-like protein 1|prominin-like 1|prominin-1|prominin 1|PROM1|OTTHUMP00000217746|OTTHUMP00000217745|OTTHUMP00000217744|MCDR2|hProminin|hematopoietic stem cell antigen|CORD12|CD133|antigen AC133|AC133

Usage Summary **Immunofluorescence:** Strong expression of the protein seen in the cytoplasm of HeLa and U2OS cells. Recommended concentration: 10µg/ml. **Flow Cytometry:** Flow cytometric analysis of HeLa cells. Recommended concentration: 10ug/ml.

Accession ID NP_006008.1; NP_001139319.1; NP_001139324.1; NP_001139323.1; NP_001139322.1; NP_001139321.1

Blocking Peptide EBP11822

Immunogen Peptide with sequence HPSSETCNSIRLS, from the internal region of the protein sequence according to NP_006008.1; NP_001139319.1; NP_001139324.1; NP_001139323.1; NP_001139322.1; NP_001139321.1.

| | |
|------------------------------|---|
| Product Comments | This antibody is expected to recognize all reported isoforms (NP_006008.1; NP_001139319.1; NP_001139324.1; NP_001139323.1; NP_001139322.1; NP_001139321.1). Reported variants represent identical protein: NP_001139320.1, NP_001139319.1 |
| Peptide Sequence | HPSETCNSIRLS |
| Purification Method | Purified from goat serum by ammonium sulphate precipitation followed by antigen affinity chromatography using the immunizing peptide. |
| Shipping Instructions | Refrigerated |
| Predicted Species | Human |
| Reactive Species | Human |
| Human Gene ID | 8842 |
| Product Grade | https://prod-vector-labs-pimcore-assets.s3.us-east-1.amazonaws.com/assets/products/image/elite_medium.png |
| ELISA Detection Limit | Antibody detection limit dilution 1:32000. |
| Application Type | Pep-ELISA, IF, FC |

GALLERY IMAGES

