



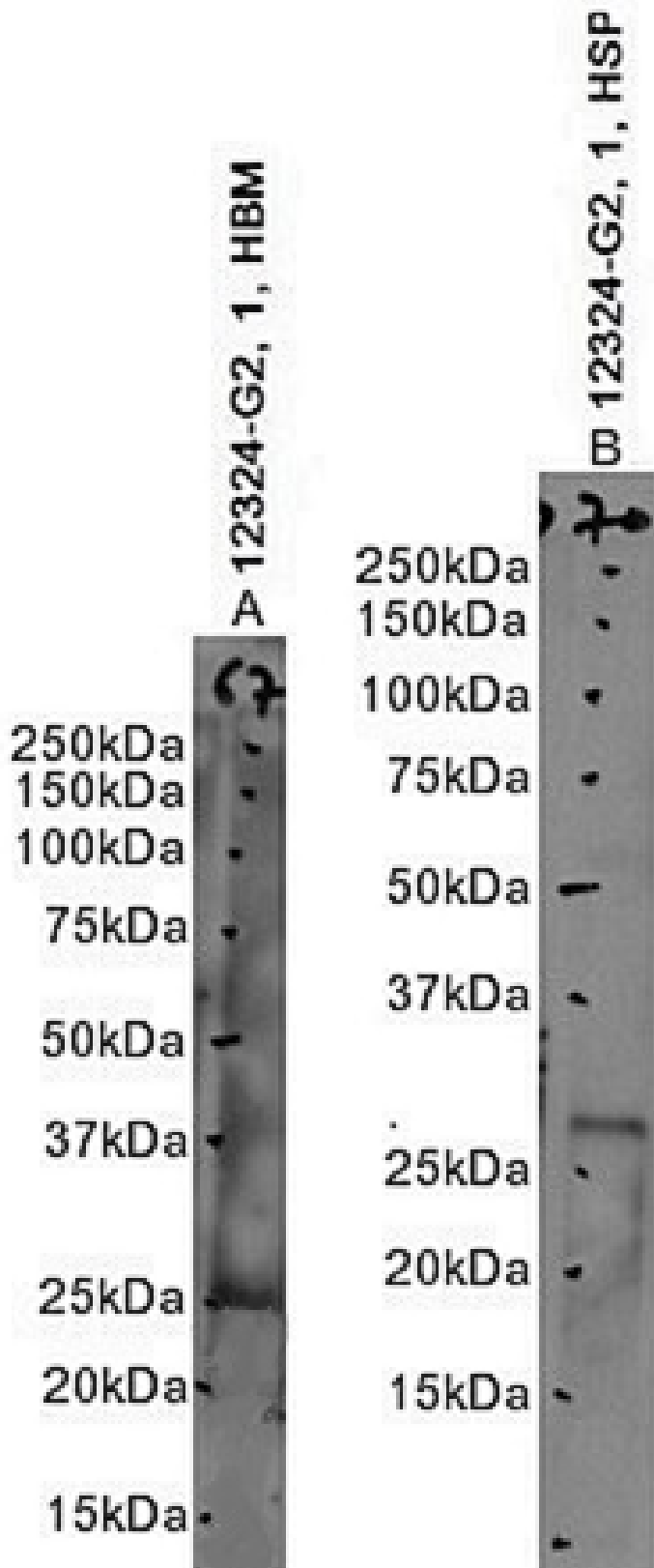
[www.everestbiotech.com](http://www.everestbiotech.com)

Email: [customerservice@vectorlabs.com](mailto:customerservice@vectorlabs.com)

Telephone: [\(650\) 697-3600](tel:(650)697-3600)

# **GOAT ANTI-PROTEINASE 3 / MYELOBLASTIN (AA88-98) ANTIBODY**

**SKU:** EB12324





## SPECIFICATIONS

<b>Formulation</b>	Supplied at 0.5 mg/ml in Tris saline, 0.02% sodium azide, pH7.3 with 0.5% bovine serum albumin.
<b>Unit Size</b>	100 µg
<b>Storage</b>	
<b>Instructions</b>	Aliquot and store at -20°C. Minimize freezing and thawing.
<b>Synonym / Alias</b>	wegener autoantigen serine proteinase, neutrophil neutrophil proteinase 4 myeloblastin leukocyte proteinase 3 azurophil granule protein 7 Wegener granulomatosis autoantigen NP-4 C-ANCA
<b>Names</b>	antigen PR3 PR-3 P29 NP4 MBT MBN CANCA C-ANCA AGP7 ACPA proteinase 3 PRTN3
<b>Usage Summary</b>	<p>&lt;strong&gt;Immunofluorescence:&lt;/strong&gt; Strong expression of the protein seen in the cytoplasm of A431 cells.</p> <p>Recommended concentration: 10µg/ml. &lt;p&gt;&lt;strong&gt;Flow Cytometry:&lt;/strong&gt; Flow cytometric analysis of A431 cells. Recommended concentration: 10ug/ml.&lt;/p&gt;</p>
<b>Accession ID</b>	NP_002768.3
<b>Blocking Peptide</b>	EBP12324
<b>Immunogen</b>	Peptide with sequence C-HNVRTQEPTQQ, from the internal region of the protein sequence according to NP_002768.3.
<b>Peptide Sequence</b>	C-HNVRTQEPTQQ
<b>Purification Method</b>	Purified from goat serum by ammonium sulphate precipitation followed by antigen affinity chromatography using the immunizing peptide.
<b>Shipping Instructions</b>	Refrigerated
<b>Predicted Species</b>	Human
<b>Reactive Species</b>	Human
<b>Human Gene ID</b>	5657
<b>Product Grade</b>	<a href="https://prod-vector-labs-pimcore-assets.s3.us-east-1.amazonaws.com/assets/products/image/elite_plus_medium.png">https://prod-vector-labs-pimcore-assets.s3.us-east-1.amazonaws.com/assets/products/image/elite_plus_medium.png</a>
<b>IHC Results</b>	Paraffin embedded Human Spleen. Recommended concentration: 5µg/ml.
<b>ELISA Detection Limit</b>	Antibody detection limit dilution 1:8000.
<b>Western Blot</b>	Approx. 27kDa band observed in Human Spleen lysates, approx. 25kDa in Human Bone Marrow lysates, and approx. 26kDa in preliminary testing of THP-1 cell lysate (calculated MW of 27.8kDa according to NP_002768.3). Recommended concentration:0.3-1µg/ml. Primary incubation 1 hour at room temperature.
<b>Application Type</b>	Pep-ELISA, WB, IHC, IF, FC



# DOCUMENTS

- [Data Sheet](#)

# GALLERY IMAGES

