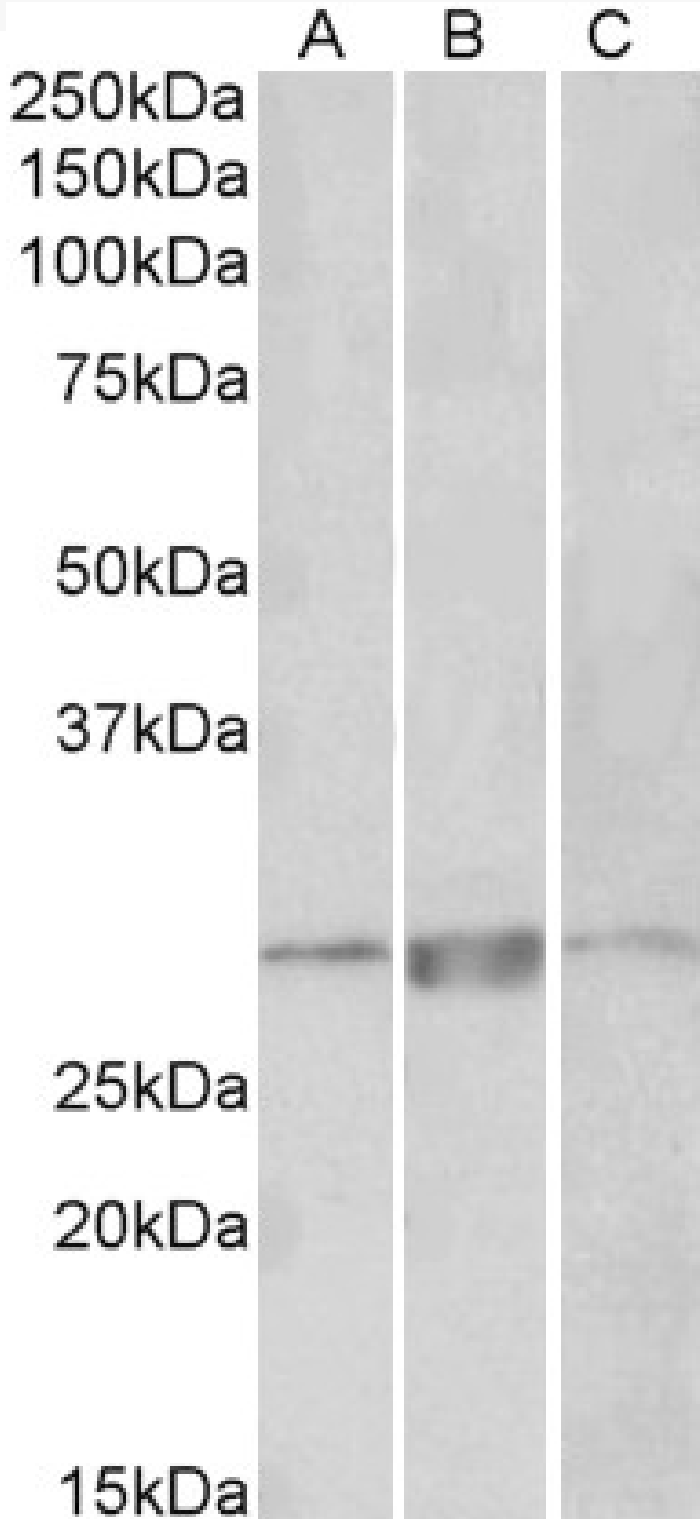


GOAT ANTI-PRRX1 ANTIBODY

SKU: EB08144



SPECIFICATIONS

Formulation	Supplied at 0.5 mg/ml in Tris saline, 0.02% sodium azide, pH7.3 with 0.5% bovine serum albumin.
Unit Size	100 µg
Storage Instructions	Aliquot and store at -20°C. Minimize freezing and thawing.
Synonym / Alias Names	PRRX1 paired related homeobox 1 PHOX1 PMX1 PRX1 homeobox protein PHOX1 paired mesoderm homeo box 1 paired mesoderm homeobox 1
Accession ID	NP_008833.1; NP_073207.1
Blocking Peptide	EBP08144
Immunogen	Peptide with sequence C-QADENVGEAGRS, from the internal region of the protein sequence according to NP_008833.1; NP_073207.1.
Product Comments	This antibody is expected to recognise both reported isoforms (NP_008833.1; NP_073207.1);
Peptide Sequence	C-QADENVGEAGRS
Purification Method	Purified from goat serum by ammonium sulphate precipitation followed by antigen affinity chromatography using the immunizing peptide.
Shipping Instructions	Refrigerated
Predicted Species	Human, Mouse, Rat
Reactive Species	Human, Mouse, Rat
Human Gene ID	5396
Product Grade	https://prod-vector-labs-pimcore-assets.s3.us-east-1.amazonaws.com/assets/products/image/elite_medium.png
ELISA Detection Limit	Antibody detection limit dilution 1:2000.
Western Blot	Approx 28kDa band observed in Human, Mouse and Rat Heart lysates (calculated MW of 27.3kDa according to NP_073207.1). Recommended concentration: 1-3µg/ml.
Application Type	Pep-ELISA, WB

DOCUMENTS

- [Data Sheet](#)

GALLERY IMAGES

