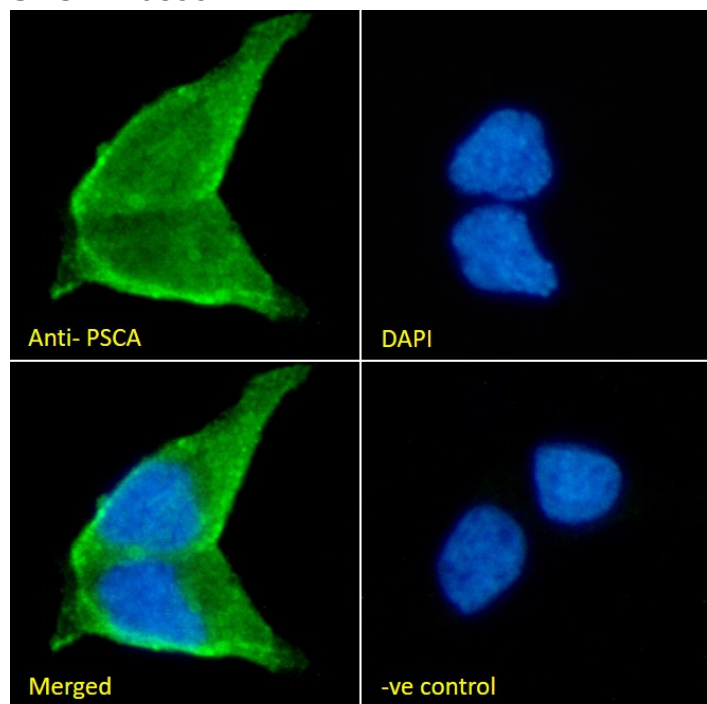


## GOAT ANTI-PSCA (AA27-40) ANTIBODY

**SKU:** EB08994

## SPECIFICATIONS

**Formulation** Supplied at 0.5 mg/ml in Tris saline, 0.02% sodium azide, pH7.3 with 0.5% bovine serum albumin.

**Unit Size** 100 µg

**Storage** Aliquot and store at -20°C. Minimize freezing and thawing.

**Synonym /**

**Alias** PRO232|prostate stem cell antigen|PSCA

## **Names**

**Usage Summary** <strong>Immunofluorescence:</strong> Strong expression of the protein seen in the membranes of LNCaP cells. Recommended concentration: 10µg/ml. <p><strong>Flow Cytometry:</strong> Flow cytometric analysis of LNCaP cells. Recommended concentration: 10ug/ml.</p>

**Accession ID** NP\_005663.2

**Blocking Peptide** EBP08994

<b>Immunogen</b>	Peptide with sequence KAQVSNEDECLQVEN, from the internal region of the protein sequence according to NP_005663.2.
<b>Peptide Sequence</b>	KAQVSNEDECLQVEN
<b>Purification Method</b>	Purified from goat serum by ammonium sulphate precipitation followed by antigen affinity chromatography using the immunizing peptide.
<b>Shipping Instructions</b>	Refrigerated
<b>Predicted Species</b>	Human
<b>Reactive Species</b>	Human
<b>Human Gene ID</b>	8000
<b>Product Grade</b>	<a href="https://prod-vector-labs-pimcore-assets.s3.us-east-1.amazonaws.com/assets/products/image/elite_medium.png">https://prod-vector-labs-pimcore-assets.s3.us-east-1.amazonaws.com/assets/products/image/elite_medium.png</a>
<b>ELISA Detection Limit</b>	Antibody detection limit dilution 1:1000.
<b>Western Blot</b>	Preliminary testing showed a band at <15kDa in Human Colon lysate at a concentration of 2ug/ml (calculated Mwt.of 12.9kDa according to NP_005663.2). Primary incubation 1 hour at room temperature.
<b>Application Type</b>	Pep-ELISA, IF, FC

## DOCUMENTS

- [Data Sheet](#)

## GALLERY IMAGES

