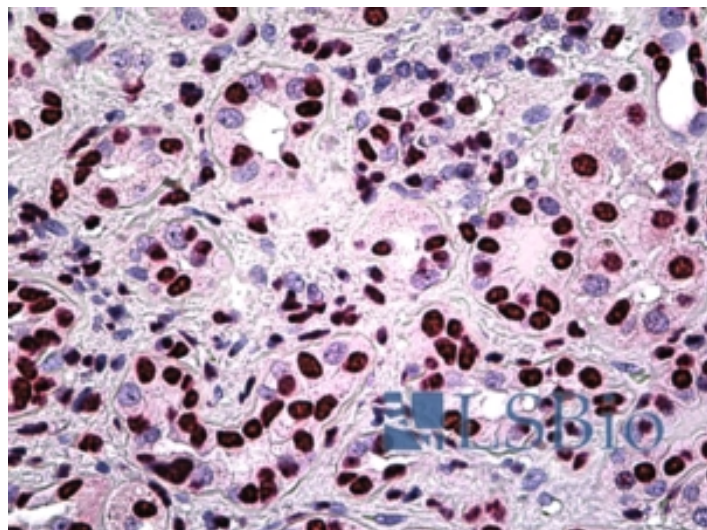


GOAT ANTI-PSF / SFPQ ANTIBODY

SKU: EB09523



SPECIFICATIONS

Formulation Supplied at 0.5 mg/ml in Tris saline, 0.02% sodium azide, pH7.3 with 0.5% bovine serum albumin.

Unit Size 100 µg

Storage Instructions Aliquot and store at -20°C. Minimize freezing and thawing.

Synonym / Alias Names splicing factor proline/glutamine rich (polypyrimidine tract-binding protein-associated)|splicing factor proline/glutamine rich (polypyrimidine tract binding protein associated)|polypyrimidine tract-binding protein-associated splicing factor|PTB-associated splicing factor|OTTHUMP00000004329|PSF|POMP100|splicing factor proline/glutamine-rich (polypyrimidine tract binding protein associated)|SFPQ

Accession ID NP_005057.1

Blocking Peptide EBP09523

Immunogen Peptide with sequence C-RGREEYEGPNKKPR, from the C Terminus of the protein sequence according to NP_005057.1.

Peptide Sequence C-RGREEYEGPNKKPR

Purification Method Purified from goat serum by ammonium sulphate precipitation followed by antigen affinity chromatography using the immunizing peptide.

Shipping Instructions Refrigerated

Predicted Species	Human, Mouse, Rat, Dog, Cow
Reactive Species	Human
Human Gene ID	6421
Mouse Gene ID	71514
Rat Gene ID	252855
Product Grade	https://prod-vector-labs-pimcore-assets.s3.us-east-1.amazonaws.com/assets/products/image/elite_medium.png
IHC Results	In paraffin embedded Human Kidney shows strong nuclear staining in PCT cells. Recommended concentration, 3-6µg/ml.
ELISA Detection Limit	Antibody detection limit dilution 1:16000.
Application Type	Pep-ELISA, IHC

DOCUMENTS

- [Data Sheet](#)

GALLERY IMAGES

