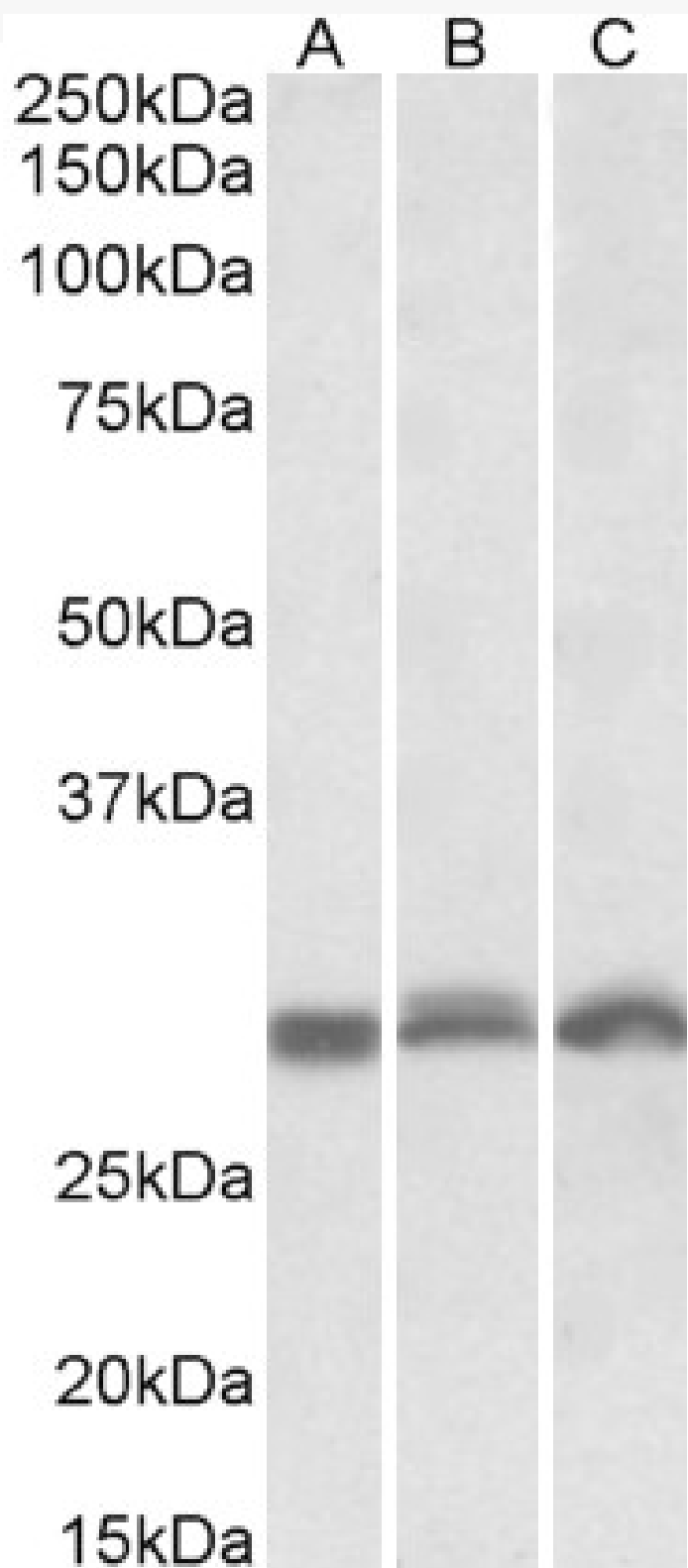


GOAT ANTI-PSMA4 ANTIBODY

SKU: EB10277



SPECIFICATIONS

Formulation	Supplied at 0.5 mg/ml in Tris saline, 0.02% sodium azide, pH7.3 with 0.5% bovine serum albumin.
Unit Size	100 µg
Storage Instructions	Aliquot and store at -20°C. Minimize freezing and thawing.
Synonym / Alias	PSMA4 PSC9 proteasome subun proteasome component C9 proteasome alpha 4 subunit proteasome (prosome, macropain) subunit, alpha type, 4 multicatalytic endopeptidase complex subunit
Names	C9 MGC24813 MGC12467 MGC111191 macropain subunit C9 HsT17706 HC9
Accession ID	NP_002780.1; NP_001096138.1
Blocking Peptide	EBP10277
Immunogen	Peptide with sequence C-SDANVLTNELR, from the internal region of the protein sequence according to NP_002780.1; NP_001096138.1.
Product Comments	This antibody is expected to recognize both reported isoforms (NP_002780.1; NP_001096138.1). Reported variants represent identical protein: NP_002780.1, NP_001096137.1
Peptide Sequence	C-SDANVLTNELR
Purification Method	Purified from goat serum by ammonium sulphate precipitation followed by antigen affinity chromatography using the immunizing peptide.
Shipping Instructions	Refrigerated
Predicted Species	Human, Mouse, Rat, Dog
Reactive Species	Human, Mouse, Rat
Human Gene ID	5685
Mouse Gene ID	26441
Rat Gene ID	29671
Product Grade	https://prod-vector-labs-pimcore-assets.s3.us-east-1.amazonaws.com/assets/products/image/elite_medium.png
ELISA Detection Limit	Antibody detection limit dilution 1:4000.
Western Blot	Approx 28kDa band observed in lysates of cell lines K562, NIH3T3 and in lysates of Human Tonsil, Human Peripheral Blood Mononucleocytes and in Mouse and Rat Spleen (calculated MW of 29.5kDa according to NP_002780.1). Recommended concentration: 0.3-1µg/ml.
Application Type	Pep-ELISA, WB

DOCUMENTS

- [Data Sheet](#)

GALLERY IMAGES

