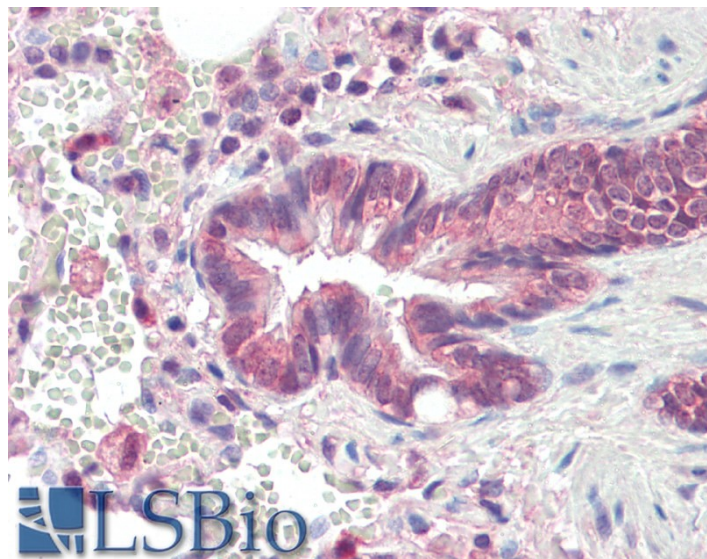


# GOAT ANTI-PSMB3 ANTIBODY

**SKU:** EB10294



## SPECIFICATIONS

**Formulation** Supplied at 0.5 mg/ml in Tris saline, 0.02% sodium azide, pH7.3 with 0.5% bovine serum albumin.

**Unit Size** 100 µg

**Storage Instructions** Aliquot and store at -20°C. Minimize freezing and thawing.

**Synonym / Alias Names** HC10-II|MGC4147|proteasome (prosome, macropain) subunit, beta type, 3|proteasome beta 3 subunit|proteasome chain 13|proteasome component C10-II|proteasome theta chain|PSMB3

**Accession ID** NP\_002786.2

**Blocking Peptide** EBP10294

**Immunogen** Peptide with sequence C-NLYELKEGRQ, from the internal region of the protein sequence according to NP\_002786.2.

**Peptide Sequence** C-NLYELKEGRQ

**Purification Method** Purified from goat serum by ammonium sulphate precipitation followed by antigen affinity chromatography using the immunizing peptide.

**Shipping Instructions** Refrigerated

<b>Predicted Species</b>	Human, Mouse, Rat, Dog, Cow, Pig
<b>Reactive Species</b>	Human
<b>Human Gene ID</b>	5691
<b>Mouse Gene ID</b>	26446
<b>Rat Gene ID</b>	29676
<b>Product Grade</b>	<a href="https://prod-vector-labs-pimcore-assets.s3.us-east-1.amazonaws.com/assets/products/image/elite_medium.png">https://prod-vector-labs-pimcore-assets.s3.us-east-1.amazonaws.com/assets/products/image/elite_medium.png</a>
<b>IHC Results</b>	Paraffin embedded Human Lung. Recommended concentration: 10µg/ml.
<b>ELISA</b>	
<b>Detection Limit</b>	Antibody detection limit dilution 1:16000.
<b>Western Blot</b>	Approx 24kDa band observed in lysates of cell line K562 (calculated MW of 22.9kDa according to NP_002786.2). Recommended concentration: 1-3µg/ml.
<b>Application Type</b>	Pep-ELISA, WB, IHC

## DOCUMENTS

- [Data Sheet](#)

## GALLERY IMAGES

