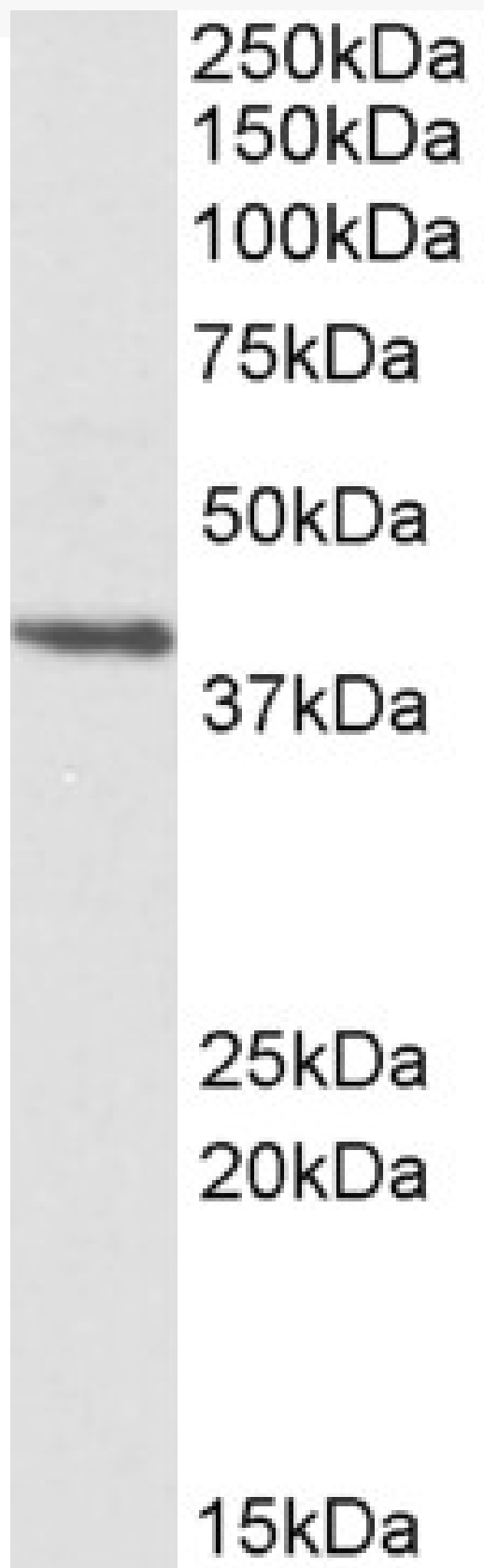


GOAT ANTI-PSMB7 ANTIBODY

SKU: EB10298



SPECIFICATIONS

Formulation	Supplied at 0.5 mg/ml in Tris saline, 0.02% sodium azide, pH7.3 with 0.5% bovine serum albumin.
Unit Size	100 µg
Storage Instructions	Aliquot and store at -20°C. Minimize freezing and thawing.
Synonym / Alias Names	PSMB7 proteasome subunit Z proteasome subunit alpha proteasome catalytic subunit 2 proteasome beta 7 subunit proteasome (prosome, macropain) subunit, beta type, 7 multicatalytic endopeptidase complex chain Z macropain chain Z
Accession ID	NP_002790.1
Blocking Peptide	EBP10298
Immunogen	Peptide with sequence C-RNAVLEADFAKR, from the internal region of the protein sequence according to NP_002790.1.
Peptide Sequence	C-RNAVLEADFAKR
Purification Method	Purified from goat serum by ammonium sulphate precipitation followed by antigen affinity chromatography using the immunizing peptide.
Shipping Instructions	Refrigerated
Predicted Species	Human, Mouse, Rat, Cow, Pig
Reactive Species	Human, Mouse
Human Gene ID	5695
Mouse Gene ID	19177
Rat Gene ID	85492
Product Grade	https://prod-vector-labs-pimcore-assets.s3.us-east-1.amazonaws.com/assets/products/image/elite_medium.png
ELISA Detection Limit	Antibody detection limit dilution 1:32000.
Western Blot	Approx 40kDa band observed in lysates of cell lines HEK 293, HeLa and Jurkat and of Mouse Fetal Brain (calculated MW of 30.0kDa according to NP_002790.1). This molecular weight is routinely observed by other sources. Recommended concentration: 0.3-1µg/ml.
Application Type	Pep-ELISA, WB

DOCUMENTS

- [Data Sheet](#)

GALLERY IMAGES

