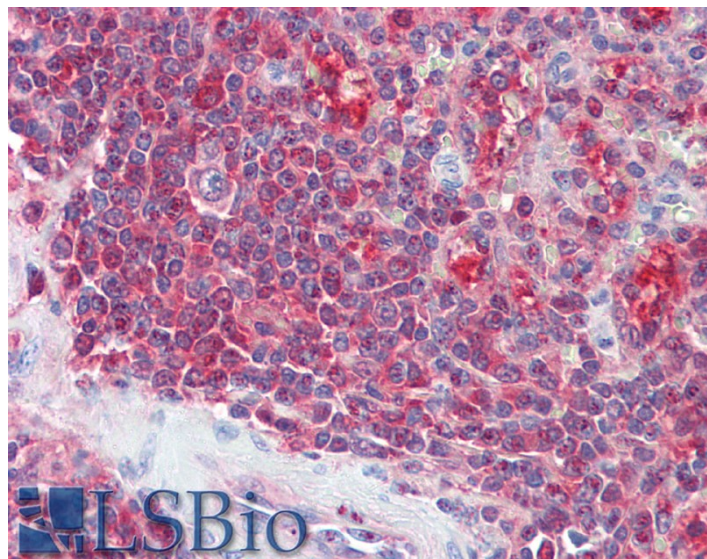


GOAT ANTI-PSME2 ANTIBODY

SKU: EB07762



SPECIFICATIONS

Formulation	Supplied at 0.5 mg/ml in Tris saline, 0.02% sodium azide, pH7.3 with 0.5% bovine serum albumin.
Unit Size	100 µg
Storage Instructions	Aliquot and store at -20°C. Minimize freezing and thawing.
Synonym / Alias Names	proteasome activator subunit 2 proteasome activator hPA28 subunit beta proteasome activator 28-beta cell migration-inducing protein 22 activator of multicatalytic protease subunit 2 MCP activator, 31-kD subunit 11S regulator complex beta subunit REGbeta PA28beta PA28B proteasome (prosome, macropain) activator subunit 2 (PA28 beta) PSME2
Accession ID	NP_002809.2
Blocking Peptide	EBP07762
Immunogen	Peptide with sequence C-NLEKIVNPKGEEKP, from the C Terminus of the protein sequence according to NP_002809.2.
Peptide Sequence	C-NLEKIVNPKGEEKP
Purification Method	Purified from goat serum by ammonium sulphate precipitation followed by antigen affinity chromatography using the immunizing peptide.

Shipping Instructions	Refrigerated
Predicted Species	Human, Mouse, Rat, Dog
Reactive Species	Human
Human Gene ID	5721
Mouse Gene ID	19188
Rat Gene ID	29614
Product Grade	https://prod-vector-labs-pimcore-assets.s3.us-east-1.amazonaws.com/assets/products/image/elite_medium.png
IHC Results	Paraffin embedded Human Spleen. Recommended concentration: 5µg/ml.
ELISA	
Detection Limit	Antibody detection limit dilution 1:32000.
Western Blot	Approx 27kDa band observed in Human Spleen lysates (calculated MW of 27.4kDa according to NP_002809.2). Recommended concentration: 0.5-1µg/ml.
Application Type	Pep-ELISA, WB, IHC

DOCUMENTS

- [Data Sheet](#)

GALLERY IMAGES

