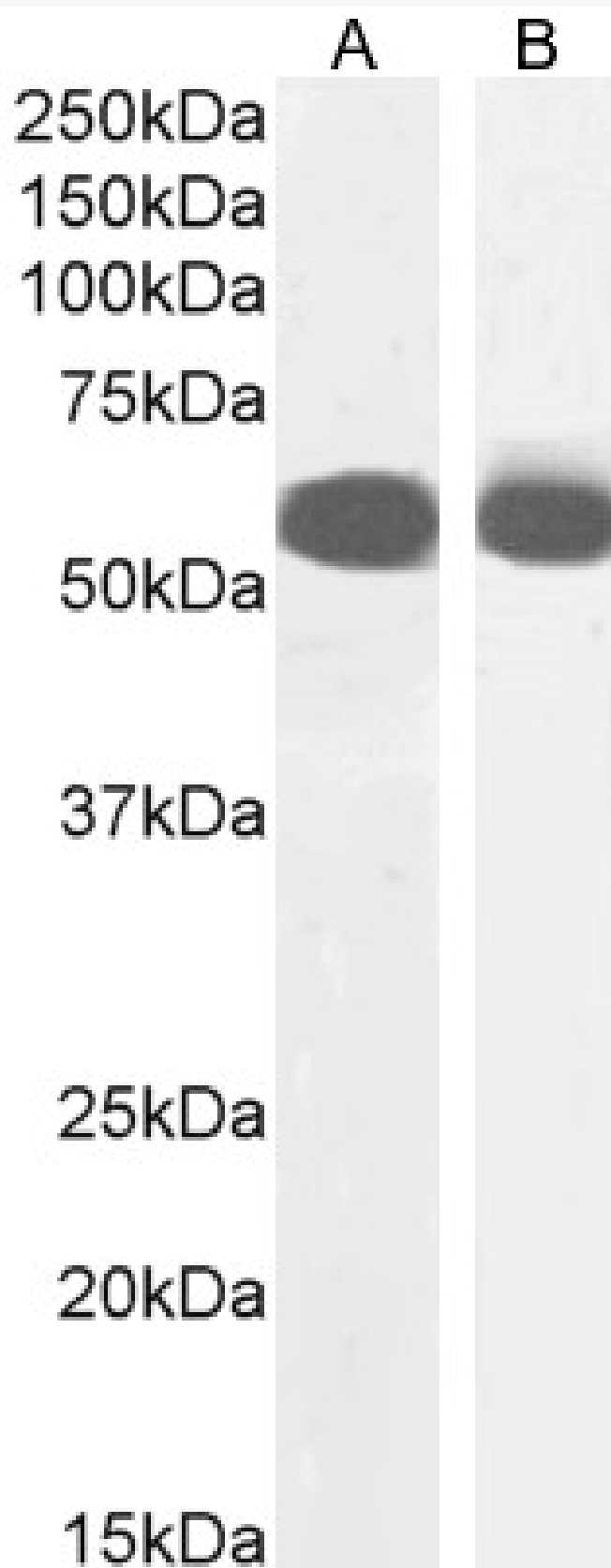


GOAT ANTI-PTBP2 ANTIBODY

SKU: EB08108



SPECIFICATIONS

Formulation	Supplied at 0.5 mg/ml in Tris saline, 0.02% sodium azide, pH7.3 with 0.5% bovine serum albumin.
Unit Size	100 µg
Storage Instructions	Aliquot and store at -20°C. Minimize freezing and thawing.
Synonym / Alias Names	splicing regulator neural polypyrimidine tract binding protein PTB-like nPTB8 nPTB7 nPTB6 nPTB5 nPTB brPTB PTBLP PTB MIBP FLJ34897 polypyrimidine tract binding protein 2 PTBP2
Usage Summary	Immunofluorescence: Strong expression of the protein seen in the nuclei of A431 cells. Recommended concentration: 10µg/ml.
Accession ID	NP_001287914.1; NP_001287915.1; NP_001287916.1; NP_001287917.1; NP_001287918.1; NP_067013.1 ;
Blocking Peptide	EBP08108
Immunogen	Peptide with sequence C-SKKFKGEDKMD, from the internal region of the protein sequence according to NP_001287914.1; NP_001287915.1; NP_001287916.1; NP_001287917.1; NP_001287918.1; NP_067013.1 ;.
Product Comments	This antibody is expected to recognise NP_001287914.1 (isoform 1), NP_001287915.1 (isoform 2), NP_001287916.1 (isoform 3), NP_001287917.1 (isoform 4), NP_001287918.1 (isoform 5), and NP_067013.1 (isoform 6).
Peptide Sequence	C-SKKFKGEDKMD
Purification Method	Purified from goat serum by ammonium sulphate precipitation followed by antigen affinity chromatography using the immunizing peptide.
Shipping Instructions	Refrigerated
Predicted Species	Human, Mouse, Rat, Cow
Reactive Species	Human, Mouse
Human Gene ID	58155
Mouse Gene ID	56195
Rat Gene ID	310820
Product Grade	https://prod-vector-labs-pimcore-assets.s3.us-east-1.amazonaws.com/assets/products/image/elite_medium.png
ELISA Detection Limit	Antibody detection limit dilution 1:1000.
Western Blot	Approx 55-60kDa band observed in Mouse Testis lysates and in nuclear lysates of cell line NIH3T3, and approx 55kDa in preliminary testing at Rat testes lysate (calculated MW of 57.6kDa according to Mouse NP_062423.1 and 57.5kDa according to NP_001297640.1). Recommended concentration: 2-3µg/ml. Primary incubation 1 hour at room temperature.

Application Type Pep-ELISA, WB, IF

DOCUMENTS

- [Data Sheet](#)

GALLERY IMAGES

