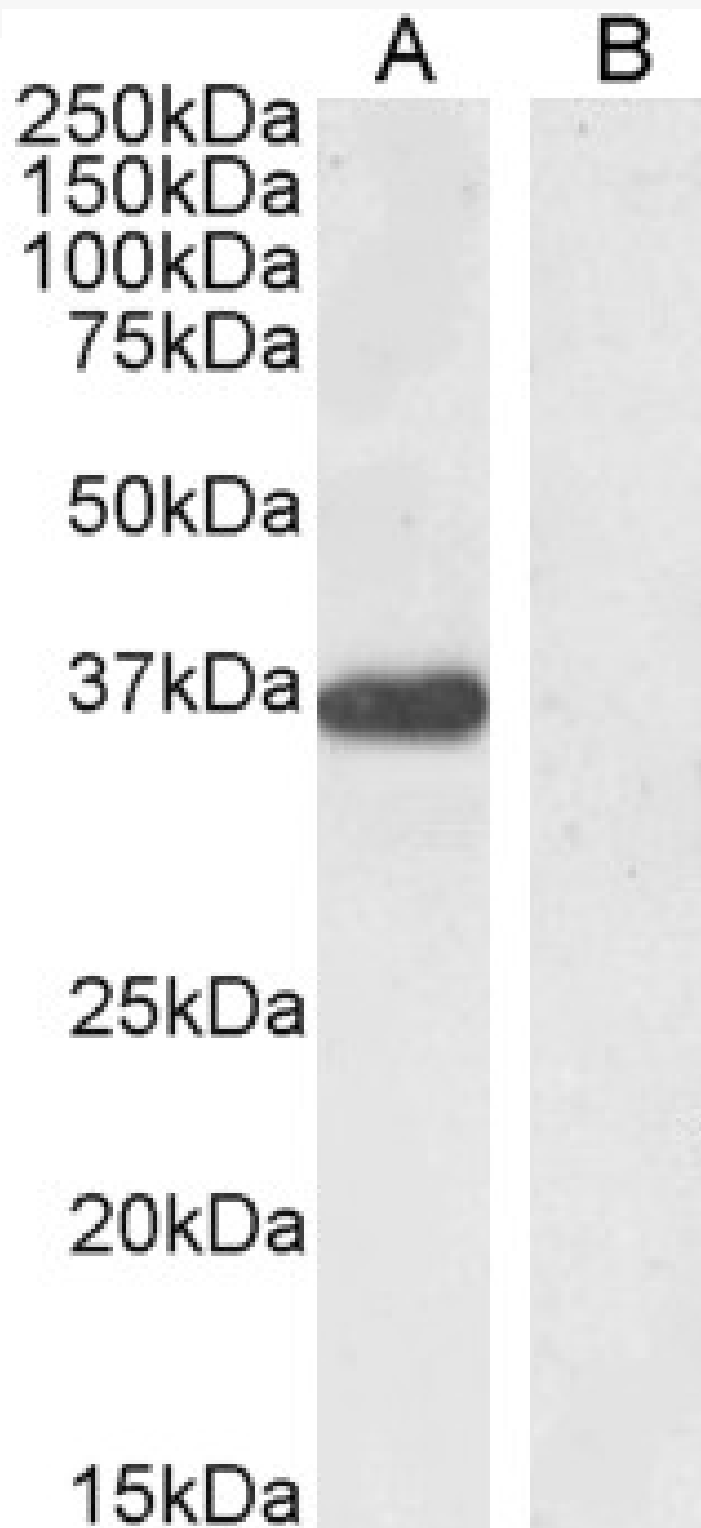


GOAT ANTI-PTF1A / PFT1-P48 ANTIBODY

SKU: EB07839



SPECIFICATIONS

Formulation	Supplied at 0.5 mg/ml in Tris saline, 0.02% sodium azide, pH7.3 with 0.5% bovine serum albumin.
Unit Size	100 µg
Storage Instructions	Aliquot and store at -20°C. Minimize freezing and thawing.
Synonym / Alias Names	pancreas transcription factor 1 subunit alpha p48 DNA-binding subunit of transcription factor PTF1 exocrine pancreas-specific transcription factor p48 class II bHLH protein PTF1A bHLH transcription factor p48 pancreas specific transcription factor, 1a PTF1-p48 PTF1A
Accession ID	NP_835455.1
Blocking Peptide	EBP07839
Immunogen	Peptide with sequence C-WTDEKQLKEQN, from the internal region of the protein sequence according to NP_835455.1.
Peptide Sequence	C-WTDEKQLKEQN
Purification Method	Purified from goat serum by ammonium sulphate precipitation followed by antigen affinity chromatography using the immunizing peptide.
Shipping Instructions	Refrigerated
Predicted Species	Human, Mouse, Rat, Dog, Zebrafish
Reactive Species	Human, Mouse
Human Gene ID	256297
Mouse Gene ID	19213
Rat Gene ID	117034
Product Grade	https://prod-vector-labs-pimcore-assets.s3.us-east-1.amazonaws.com/assets/products/image/elite_medium.png
ELISA Detection Limit	Antibody detection limit dilution 1:128000.
Western Blot	Approx 37kDa observe in Human Pancreas lysates and approx.38-40kDa in lysates of cell lines Jurkat, U2OS and NIH3T3 ,(calculated MW of 35.0kDa according to Human NP_835455.1 and 35.2kDa according to Mouse NP_061279.2). Recommended concentration: 0.5-2µg/ml. Primary incubation 1 hour at room temperature.
Application Type	Pep-ELISA, WB

SELECTED REFERENCES

[{"pmid": 19056911, "intro": "**This antibody (previous batch) has been successfully used in ICC in Human and Mouse:**", "title": "Biphasic Induction of Pdx1 in Mouse and Human Embryonic Stem Cells Can Mimic Development of Pancreatic β -Cells.", "author": "Andreia S."}]

Bernardo, Candy H.-H. Cho, Sharon Mason, Hilary M Docherty, Roger A. Pedersen, Ludovic Vallier and Kevin Docherty.", "journal": "Stem Cells. 2009 Feb;27(2):341-51."}, {"pmid": 21852532, "intro": "**This antibody (previous batch) has been successfully used in Western blot in Mouse:**", "title": "LRH-1 and PTF1-L coregulate an exocrine pancreas-specific transcriptional network for digestive function.", "author": "Holmstrom SR, Deering T, Swift GH, Poelwijk FJ, Mangelsdorf DJ, Kliewer SA, MacDonald RJ.", "journal": "Genes Dev. 2011 Aug 15;25(16):1674-9."}]

DOCUMENTS

- [Data Sheet](#)

GALLERY IMAGES

