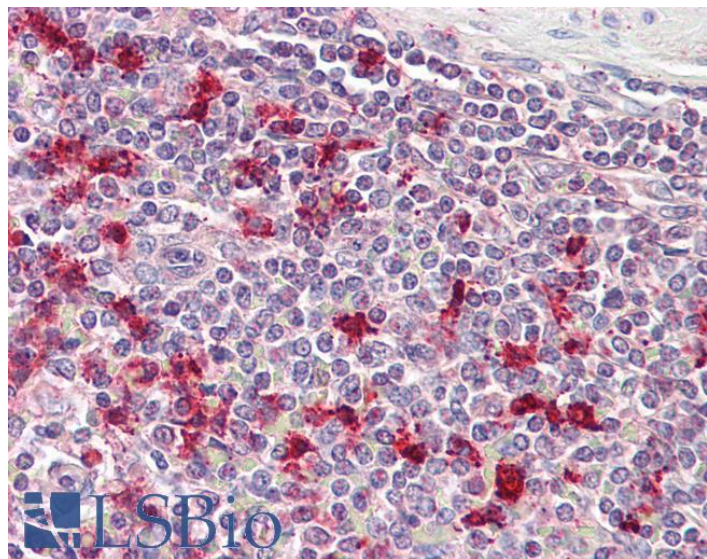


# GOAT ANTI-PTMA ANTIBODY

**SKU:** EB09070



## SPECIFICATIONS

**Formulation** Supplied at 0.5 mg/ml in Tris saline, 0.02% sodium azide, pH7.3 with 0.5% bovine serum albumin.

**Unit Size** 100 µg

**Storage Instructions** Aliquot and store at -20°C. Minimize freezing and thawing.

**Synonym / Alias Names** prothymosin, alpha (gene sequence 28)|hypothetical protein MGC12250|prothymosin, alpha (gene sequence 28)|prothymosin, alpha (gene sequence 28)|region containing prothymosin, alpha (gene sequence 28)|prothymosin, alpha (gene sequence 28)|prothymosin alpha protein|gene sequence 28|TMSA|MGC104802|prothymosin, alpha|PTMA

**Accession ID** NP\_001092755.1; NP\_002814.3

**Blocking Peptide** EBP09070

**Immunogen** Peptide with sequence C-DVDTKKQKTDEDD, from the C Terminus of the protein sequence according to NP\_001092755.1; NP\_002814.3.

**Product Comments** This antibody is expected to recognize both reported isoforms (NP\_001092755.1; NP\_002814.3).

**Peptide Sequence** C-DVDTKKQKTDEDD

<b>Purification Method</b>	Purified from goat serum by ammonium sulphate precipitation followed by antigen affinity chromatography using the immunizing peptide.
<b>Shipping Instructions</b>	Refrigerated
<b>Predicted Species</b>	Human, Rat, Dog
<b>Reactive Species</b>	Human
<b>Human Gene ID</b>	5757
<b>Rat Gene ID</b>	500448
<b>Product Grade</b>	<a href="https://prod-vector-labs-pimcore-assets.s3.us-east-1.amazonaws.com/assets/products/image/elite_medium.png">https://prod-vector-labs-pimcore-assets.s3.us-east-1.amazonaws.com/assets/products/image/elite_medium.png</a>
<b>IHC Results</b>	Paraffin embedded Human Spleen. Recommended concentration: 3.75µg/ml.
<b>ELISA</b>	
<b>Detection Limit</b>	Antibody detection limit dilution 1:1000.
<b>Application Type</b>	Pep-ELISA, IHC

## DOCUMENTS

- [Data Sheet](#)

## GALLERY IMAGES

