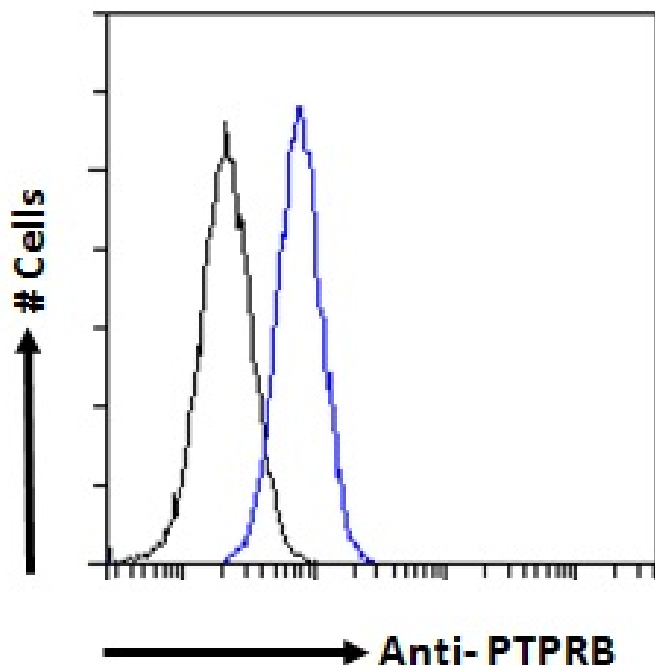


# GOAT ANTI-PTPRB ANTIBODY

SKU: EB10158



## SPECIFICATIONS

**Formulation** Supplied at 0.5 mg/ml in Tris saline, 0.02% sodium azide, pH7.3 with 0.5% bovine serum albumin.

**Unit Size** 100 µg

**Storage Instructions** Aliquot and store at -20°C. Minimize freezing and thawing.

**Synonym / Alias Names** PTPRB|VEPTP|R-PTP-BETA|PTPB|protein tyrosine phosphatase, receptor type, beta polypeptide|protein tyrosine phosphatase, receptor type, B|MGC59935|MGC142023|HPTP-BETA|HPTPB|FLJ44133|DKFZp686H15164|DKFZp686E2262

**Usage Summary** **Immunofluorescence:** Strong expression of the protein seen in the membranes and vesicles of A431 cells. Recommended concentration: 10µg/ml. **Flow Cytometry:** Flow cytometric analysis of A431 cells. Recommended concentration: 10ug/ml.

**Accession ID** NP\_001103224.1; NP\_002828.3; NP\_001193901.1

**Blocking Peptide** EBP10158

<b>Immunogen</b>	Peptide with sequence C-ENHSFSQERTVPDK, from the internal region of the protein sequence according to NP_001103224.1; NP_002828.3; NP_001193901.1.
<b>Peptide Sequence</b>	C-ENHSFSQERTVPDK
<b>Purification Method</b>	Purified from goat serum by ammonium sulphate precipitation followed by antigen affinity chromatography using the immunizing peptide.
<b>Shipping Instructions</b>	Refrigerated
<b>Predicted Species</b>	Human, Rat, Pig, Dog, Cow
<b>Reactive Species</b>	Human
<b>Human Gene ID</b>	5787
<b>Rat Gene ID</b>	314843
<b>Product Grade</b>	<a href="https://prod-vector-labs-pimcore-assets.s3.us-east-1.amazonaws.com/assets/products/image/elite_medium.png">https://prod-vector-labs-pimcore-assets.s3.us-east-1.amazonaws.com/assets/products/image/elite_medium.png</a>
<b>ELISA Detection Limit</b>	Antibody detection limit dilution 1:16000.
<b>Application Type</b>	Pep-ELISA, IF, FC

## DOCUMENTS

- [Data Sheet](#)

## GALLERY IMAGES

