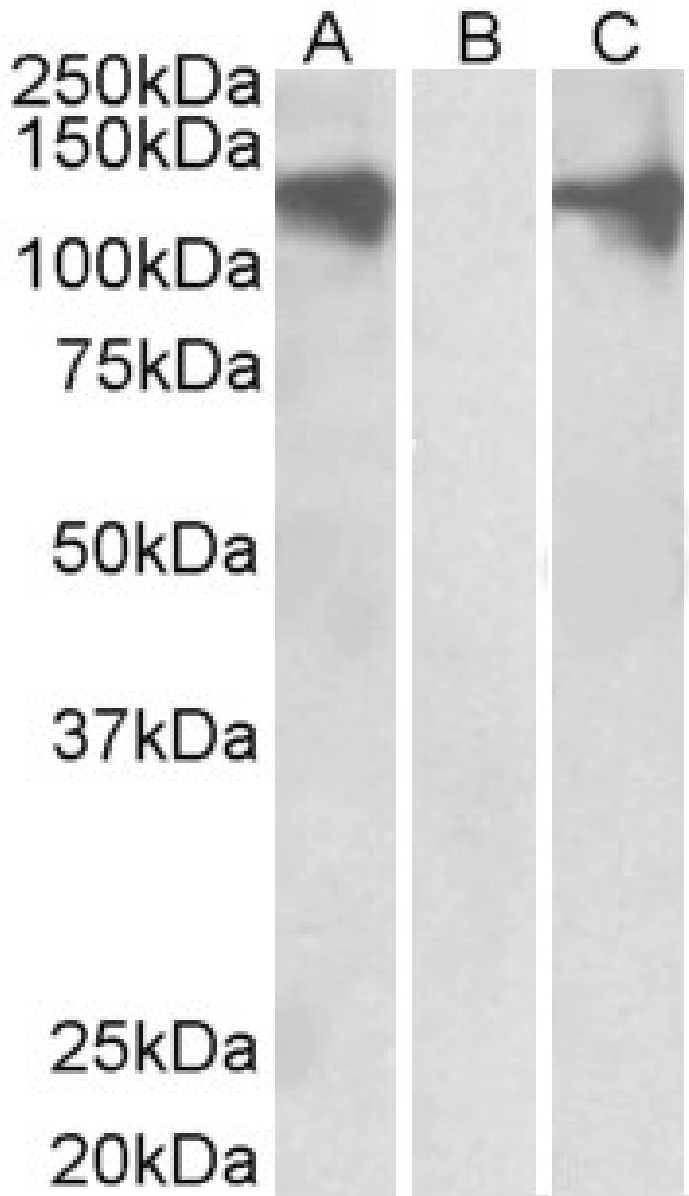




## GOAT ANTI-PUM2 ANTIBODY

SKU: EB06679





## SPECIFICATIONS

<b>Formulation</b>	Supplied at 0.5 mg/ml in Tris saline, 0.02% sodium azide, pH7.3 with 0.5% bovine serum albumin.
<b>Unit Size</b>	100 µg
<b>Storage Instructions</b>	Aliquot and store at -20°C. Minimize freezing and thawing.
<b>Synonym / Alias Names</b>	pumilio homolog 2 OTTHUMP00000200539 MGC138253 MGC138251 FLJ36528 pumilio (Drosophila) homolog 2 pumilio homolog 2 (Drosophila) KIAA0235 PUM2 PUMH2 PUM2
<b>Accession ID</b>	NP_056132.1
<b>Blocking Peptide</b>	EBP06679
<b>Immunogen</b>	Peptide with sequence C-DQNRDLKQGDDDDSK, from the internal region of the protein sequence according to NP_056132.1.
<b>Peptide Sequence</b>	C-DQNRDLKQGDDDDSK
<b>Purification Method</b>	Purified from goat serum by ammonium sulphate precipitation followed by antigen affinity chromatography using the immunizing peptide.
<b>Shipping Instructions</b>	Refrigerated
<b>Predicted Species</b>	Human, Cow
<b>Reactive Species</b>	Human
<b>Human Gene ID</b>	23369
<b>Product Grade</b>	<a href="https://prod-vector-labs-pimcore-assets.s3.us-east-1.amazonaws.com/assets/products/image/elite_medium.png">https://prod-vector-labs-pimcore-assets.s3.us-east-1.amazonaws.com/assets/products/image/elite_medium.png</a>
<b>IHC Results</b>	Paraffin embedded Human Testis. Recommended concentration: 10µg/ml.
<b>ELISA Detection Limit</b>	Antibody detection limit dilution 1:4000.
<b>Western Blot</b>	In transfected HEK293 transiently expressing full-length Human PUM2 (myc and DYKDDDDK tagged), a band of approx. 140kDa was observed. No bands were observed in mock-transfected HEK293 and the same band was observed using anti-DYKDDDDK tag antibody. Recommended concentration 0.3-0.5µg/ml.
<b>Application Type</b>	Pep-ELISA, WB-Trf, IHC

## DOCUMENTS

- [Data Sheet](#)



## GALLERY IMAGES

