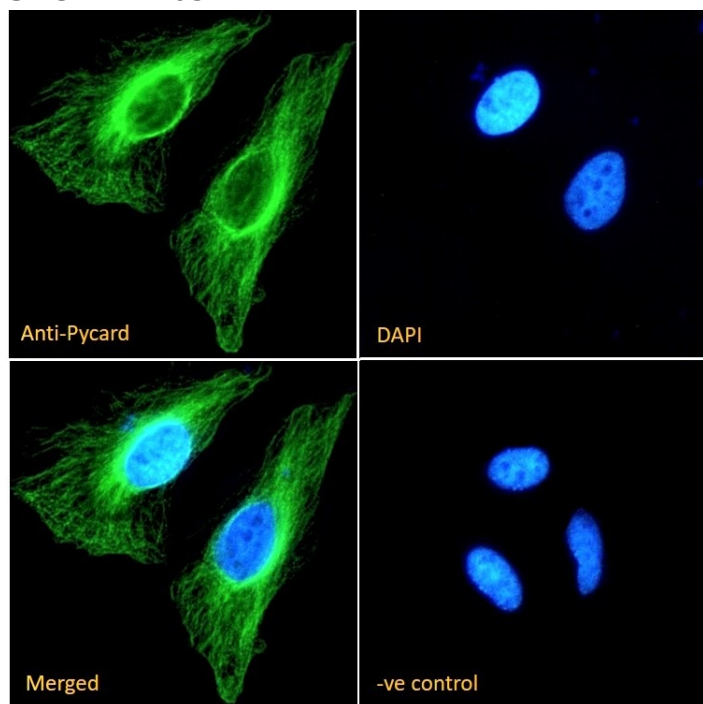


GOAT ANTI-PYCARD (RODENT) ANTIBODY

SKU: EB12054



SPECIFICATIONS

Formulation Supplied at 0.5 mg/ml in Tris saline, 0.02% sodium azide, pH7.3 with 0.5% bovine serum albumin.

Unit Size 100 µg

Storage Instructions Aliquot and store at -20°C. Minimize freezing and thawing.

Synonym / Alias Names apoptosis-associated speck-like protein containing a CARD|PYD and CARD domain-containing protein|masc|TNS1|TMS-1|CARD5|Asc|9130417A21Rik|PYD and CARD domain containing|Pycard

Usage Summary Immunofluorescence: Strong expression of the protein seen in the cytoplasm of NIH3T3, KNRK and HeLa cells. Recommended concentration: 10µg/ml.

Accession ID NP_075747.3

Blocking Peptide EBP12054

Immunogen Peptide with sequence C-DLTDKLVSYYLES, from the internal region of the protein sequence according to NP_075747.3.

Peptide Sequence	C-DLTDKLVSYYLES
Purification Method	Purified from goat serum by ammonium sulphate precipitation followed by antigen affinity chromatography using the immunizing peptide.
Shipping Instructions	Refrigerated
Predicted Species	Human, Mouse, Rat, Dog, Pig, Cow
Reactive Species	Human, Mouse, Rat
Human Gene ID	29108
Mouse Gene ID	66824
Rat Gene ID	282817
Product Grade	https://prod-vector-labs-pimcore-assets.s3.us-east-1.amazonaws.com/assets/products/image/elite_medium.png
ELISA Detection Limit	Antibody detection limit dilution 1:64000.
Application Type	Pep-ELISA, IF

DOCUMENTS

- [Data Sheet](#)

GALLERY IMAGES

