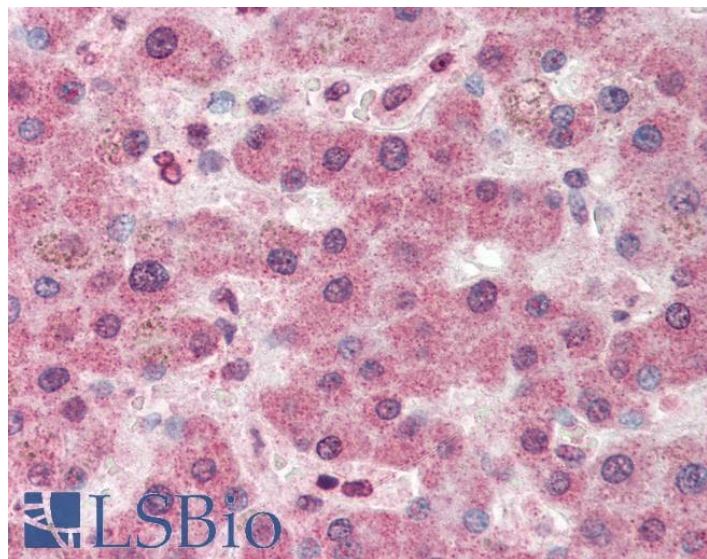


GOAT ANTI-PYRUVATE CARBOXYLASE ANTIBODY

SKU: EB08310



SPECIFICATIONS

Formulation	Supplied at 0.5 mg/ml in Tris saline, 0.02% sodium azide, pH7.3 with 0.5% bovine serum albumin.
Unit Size	100 µg
Storage Instructions	Aliquot and store at -20°C. Minimize freezing and thawing.
Synonym / Alias	PCB pyruvate carboxylase PC
Names	
Usage Summary	Flow Cytometry: Flow cytometric analysis of HeLa cells. Recommended concentration: 10ug/ml.
Accession ID	NP_000911.2; NP_001035806.1; NP_071504.2
Blocking Peptide	EBP08310
Immunogen	Peptide with sequence C-KFKEVKKAYVEANQ, from the internal region of the protein sequence according to NP_000911.2; NP_001035806.1; NP_071504.2.
Product Comments	All reported variants (NP_000911.2; NP_001035806.1; NP_071504.2) represent identical protein.
Peptide Sequence	C-KFKEVKKAYVEANQ

Purification Method	Purified from goat serum by ammonium sulphate precipitation followed by antigen affinity chromatography using the immunizing peptide.
Shipping Instructions	Refrigerated
Predicted Species	Human, Mouse, Rat, Dog, Cow, Pig
Reactive Species	Human
Human Gene ID	5091
Mouse Gene ID	18563
Rat Gene ID	25104
Product Grade	https://prod-vector-labs-pimcore-assets.s3.us-east-1.amazonaws.com/assets/products/image/elite_plus_medium.png
IHC Results	Paraffin embedded Human Liver. Recommended concentration: 5µg/ml.
ELISA	
Detection Limit	Antibody detection limit dilution 1:16000.
Application Type	Pep-ELISA, FC, IHC

DOCUMENTS

- [Data Sheet](#)

GALLERY IMAGES

