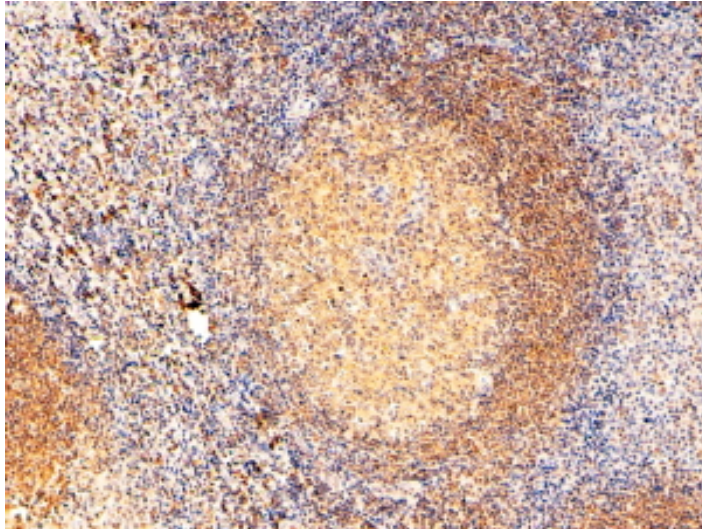




GOAT ANTI-RAC2 ANTIBODY

SKU: EB05314



SPECIFICATIONS

Formulation Supplied at 0.5 mg/ml in Tris saline, 0.02% sodium azide, pH7.3 with 0.5% bovine serum albumin.

Unit Size 100 µg

Storage Instructions Aliquot and store at -20°C. Minimize freezing and thawing.

Synonym / Alias small G protein|HSPC022|Gx|Ras-related C3 botulinum toxin substrate 3 (rho family, small GTP-binding protein Rac2)|rho family, small GTP binding protein Rac2|Ras-related C3 botulinum toxin substrate 2|EN-7|ras-related C3 botulinum toxin substrate 2 (rho family, small GTP binding protein Rac2)|RAC2

Accession ID NP_002863.1

Blocking Peptide EBP05314

Immunogen Peptide with sequence PQPTRQQKRACSL, from the C Terminus of the protein sequence according to NP_002863.1.

Peptide Sequence PQPTRQQKRACSL

Purification Method Purified from goat serum by ammonium sulphate precipitation followed by antigen affinity chromatography using the immunizing peptide.

Shipping Instructions Refrigerated



Predicted Species	Human, Mouse, Rat
Reactive Species	Human
Human Gene ID	5880
Product Grade	https://prod-vector-labs-pimcore-assets.s3.us-east-1.amazonaws.com/assets/products/image/elite_medium.png
IHC Results	In paraffin embedded Human Tonsil shows staining in mantle zone and some in the interfollicular area. Unstained in germinal centre. Recommended concentration, 2-4µg/ml.
ELISA	
Detection Limit	Antibody detection limit dilution 1:32000.
Western Blot	Approx 22kDa band observed in lysates of cell line Molt4 (calculated MW of 21.4kDa according to NP_002863.1). Recommended concentration: 0.1-0.3µg/ml. Primary incubation 1 hour at room temperature.
Application Type	Pep-ELISA, WB, IHC

DOCUMENTS

- [Data Sheet](#)

GALLERY IMAGES

