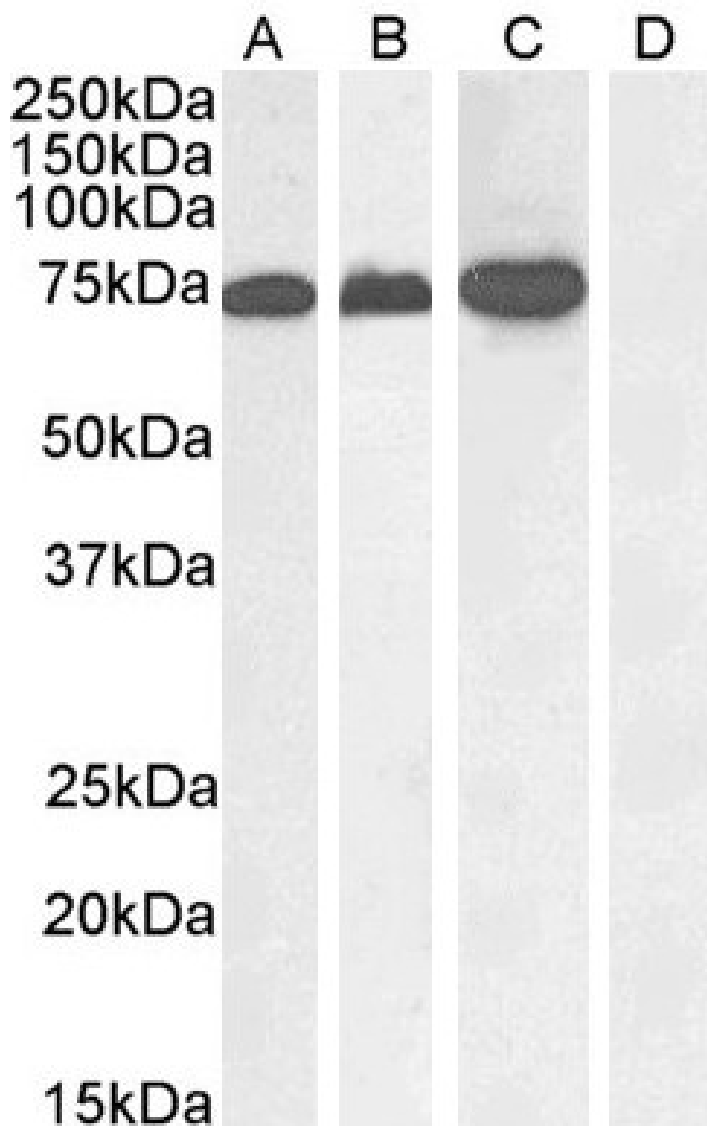


GOAT ANTI-RACGAP1 / MGCRACGAP ANTIBODY

SKU: EB05315



SPECIFICATIONS

Formulation Supplied at 0.5 mg/ml in Tris saline, 0.02% sodium azide, pH7.3 with 0.5% bovine serum albumin.

Unit Size 100 µg

Storage Instructions	Aliquot and store at -20°C. Minimize freezing and thawing.
Synonym / Alias Names	HsCYK-4 HsCYK-4 GTPase activating protein MGCRCAGAP ID-GAP Rac GTPase activating protein 1 MgcRacGAP RACGAP1
Usage Summary	Immunofluorescence: Strong expression of the protein seen in the cytoplasm of MCF7 cells. Recommended concentration: 10µg/ml. Flow Cytometry: Flow cytometric analysis of MCF7 cells. Recommended concentration: 10ug/ml.
Accession ID	NP_037409.2; NP_001306934.1; NP_001306935.1; NP_001306936.1
Blocking Peptide	EBP05315
Immunogen	Peptide with sequence C-GRQGNFFASPMLK, from the C Terminus of the protein sequence according to NP_037409.2; NP_001306934.1; NP_001306935.1; NP_001306936.1.
Product Comments	This antibody is expected to recognize all reported isoforms (NP_037409.2; NP_001306934.1; NP_001306935.1; NP_001306936.1). Reported variants represent identical protein: NP_001306928.1, NP_001119576.1, NP_037409.2, NP_001306931.1, NP_001306929.1, NP_001119575.1, NP_001306932.1, NP_001306930.1, NP_001306933.1
Peptide Sequence	C-GRQGNFFASPMLK
Purification Method	Purified from goat serum by ammonium sulphate precipitation followed by antigen affinity chromatography using the immunizing peptide.
Shipping Instructions	Refrigerated
Predicted Species	Human, Dog, Cow
Reactive Species	Human
Human Gene ID	29127
Product Grade	https://prod-vector-labs-pimcore-assets.s3.us-east-1.amazonaws.com/assets/products/image/elite_plus_medium.png
IHC Results	In paraffin embedded Human Testis, shows nuclear staining of many cells. Recommended concentration: 1µg/ml.
ELISA Detection Limit	Antibody detection limit dilution 1:32000.
Western Blot	Approx 75kDa band observed in lysates of cell line Jurkat, and in nuclear lysates of cell lines A431 and Jurkat (calculated MW of 71.0kDa according to NP_037409.2). Recommended concentration: 0.3-1µg/ml. Primary incubation 1 hour at room temperature. Negative Control: Human Pancreas lysate.
Application Type	Pep-ELISA, WB, IHC, IF, FC

DOCUMENTS

- [Data Sheet](#)

GALLERY IMAGES

