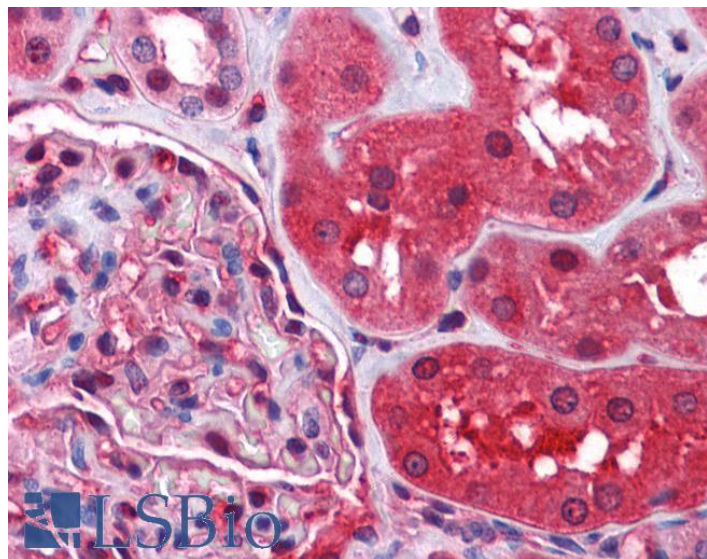


GOAT ANTI-RADIXIN ANTIBODY

SKU: EB07306



SPECIFICATIONS

Formulation Supplied at 0.5 mg/ml in Tris saline, 0.02% sodium azide, pH7.3 with 0.5% bovine serum albumin.

Unit Size 100 µg

Storage Instructions Aliquot and store at -20°C. Minimize freezing and thawing.

Synonym /

Alias radixin|RDX

Names

Accession ID NP_002897.1

Blocking Peptide EBP07306

Immunogen Peptide with sequence C-QARDETKKTQND, from the internal region of the protein sequence according to NP_002897.1.

Peptide Sequence C-QARDETKKTQND

Purification Method Purified from goat serum by ammonium sulphate precipitation followed by antigen affinity chromatography using the immunizing peptide.

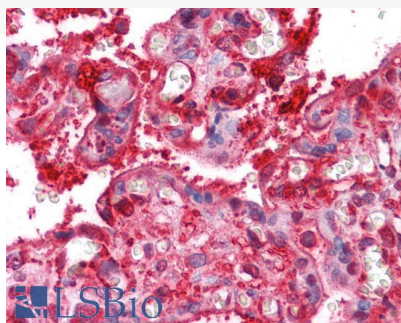
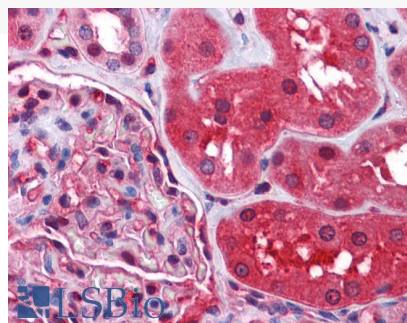
Shipping Instructions Refrigerated

Predicted Species	Human, Mouse, Rat, Dog
Reactive Species	Human, Mouse, Rat
Human Gene ID	5962
Mouse Gene ID	19684
Rat Gene ID	315655
Product Grade	https://prod-vector-labs-pimcore-assets.s3.us-east-1.amazonaws.com/assets/products/image/elite_medium.png
IHC Results	Paraffin embedded Human Placenta and Kidney. Recommended concentration: 2.5µg/ml.
ELISA	
Detection Limit	Antibody detection limit dilution 1:4000.
Western Blot	Approx 80kDa band observed in Human Lymph Node, Tonsil and Spleen lysates (calculated MW of 68.6kDa according to NP_002897.1). The same 80kDa was also observed in lysates of several Mouse and Rat tissues and in lysates of cell lines NIH3T3, HeLa, Jurkat, and A431. The observed molecular weight corresponds to earlier findings in literature (Magendantz et al, J Biol Chem. 1995 Oct 27;270(43):25324-7. PMID: 7592691). Recommended concentration: 0.01-0.03µg/ml. Primary incubation was 1 hour.
Application Type	Pep-ELISA, WB, IHC

DOCUMENTS

- [Data Sheet](#)

GALLERY IMAGES



250kDa

150kDa

100kDa

75kDa

50kDa

37kDa

25kDa

20kDa

15kDa

10kDa

