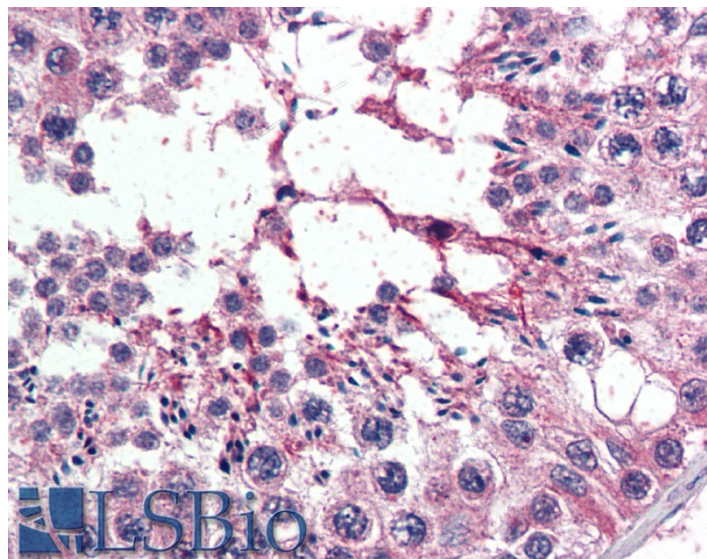


GOAT ANTI-RANBP16 / EXPORTIN 7 ANTIBODY

SKU: EB06243



SPECIFICATIONS

Formulation Supplied at 0.5 mg/ml in Tris saline, 0.02% sodium azide, pH7.3 with 0.5% bovine serum albumin.

Unit Size 100 µg

Storage Instructions Aliquot and store at -20°C. Minimize freezing and thawing.

Synonym /

Alias RAN binding protein 16|KIAA0745|RANBP16|Exportin 7|XPO7

Names

Accession ID NP_001093631.1; NP_055839; NP_001093632.1

Blocking Peptide EBP06243

Immunogen Peptide with sequence C-NSTYGVNSNDMMMS, from the C Terminus of the protein sequence according to NP_001093631.1; NP_055839; NP_001093632.1.

Product Comments This antibody is expected to recognise all the reported isoforms (NP_001093631.1; NP_055839; NP_001093632.1).

Peptide Sequence C-NSTYGVNSNDMMMS

Purification Method Purified from goat serum by ammonium sulphate precipitation followed by antigen affinity chromatography using the immunizing peptide.

Shipping Instructions	Refrigerated
Predicted Species	Human, Mouse, Dog, Pig, Cow
Reactive Species	Human
Human Gene ID	23039
Mouse Gene ID	65246
Product Grade	https://prod-vector-labs-pimcore-assets.s3.us-east-1.amazonaws.com/assets/products/image/elite_medium.png
IHC Results	Paraffin embedded Human Testis. Recommended concentration: 5µg/ml.
ELISA	
Detection Limit	Antibody detection limit dilution 1:32000.
Western Blot	Approx 110kDa band observed in Hela lysates (predicted size of approx. 124kDa according to NP_055839). Recommended concentration: 0.5-1µg/ml
Application Type	Pep-ELISA, WB, IHC

DOCUMENTS

- [Data Sheet](#)

GALLERY IMAGES

