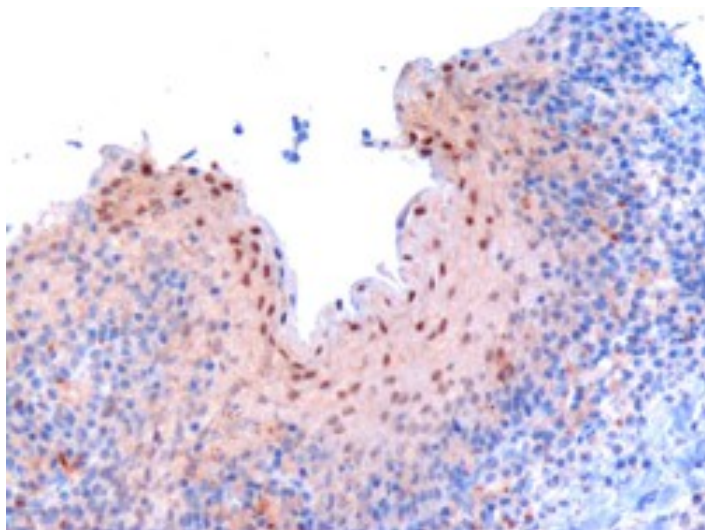


GOAT ANTI-RANBPM / RANBP9 ANTIBODY

SKU: EB06028



SPECIFICATIONS

Formulation Supplied at 0.5 mg/ml in Tris saline, 0.02% sodium azide, pH7.3 with 0.5% bovine serum albumin.

Unit Size 100 µg

Storage Instructions Aliquot and store at -20°C. Minimize freezing and thawing.

Synonym / Alias Names ran binding protein, centrosomal|novel centrosomal protein RanBPM|RANBPM|RAN binding protein 9|RanBPM|RANBP9

Usage Summary **Immunocytochemistry:** A customer reported successful use on HeLa.

Accession ID NP_005484.2

Blocking Peptide EBP06028

Immunogen Peptide with sequence GSCAFATVEDYLH, from the C Terminus of the protein sequence according to NP_005484.2.

Product Comments This product is also expected to recognize the centrosome-associated truncated isoform RANBPM (BAA23216.1).

Peptide Sequence GSCAFATVEDYLH

Purification Method	Purified from goat serum by ammonium sulphate precipitation followed by antigen affinity chromatography using the immunizing peptide.
Shipping Instructions	Refrigerated
Predicted Species	Human, Mouse, Dog, Pig
Reactive Species	Human
Human Gene ID	10048
Mouse Gene ID	56705
Product Grade	https://prod-vector-labs-pimcore-assets.s3.us-east-1.amazonaws.com/assets/products/image/elite_medium.png
IHC Results	In paraffin embedded Human Tonsil stains nuclei in epithelial cells of tonsillar cryptae. Recommended concentration: 3µg/ml. Paraffin embedded Human Testis. Recommended concentration: 10µg/ml.
ELISA Detection Limit	Antibody detection limit dilution 1:16000.
Western Blot	Preliminary experiments gave no signal but low background in whole cell Hela lysates at up to 1µg/ml.
Application Type	Pep-ELISA, IHC, ICC

DOCUMENTS

- [Data Sheet](#)

GALLERY IMAGES

