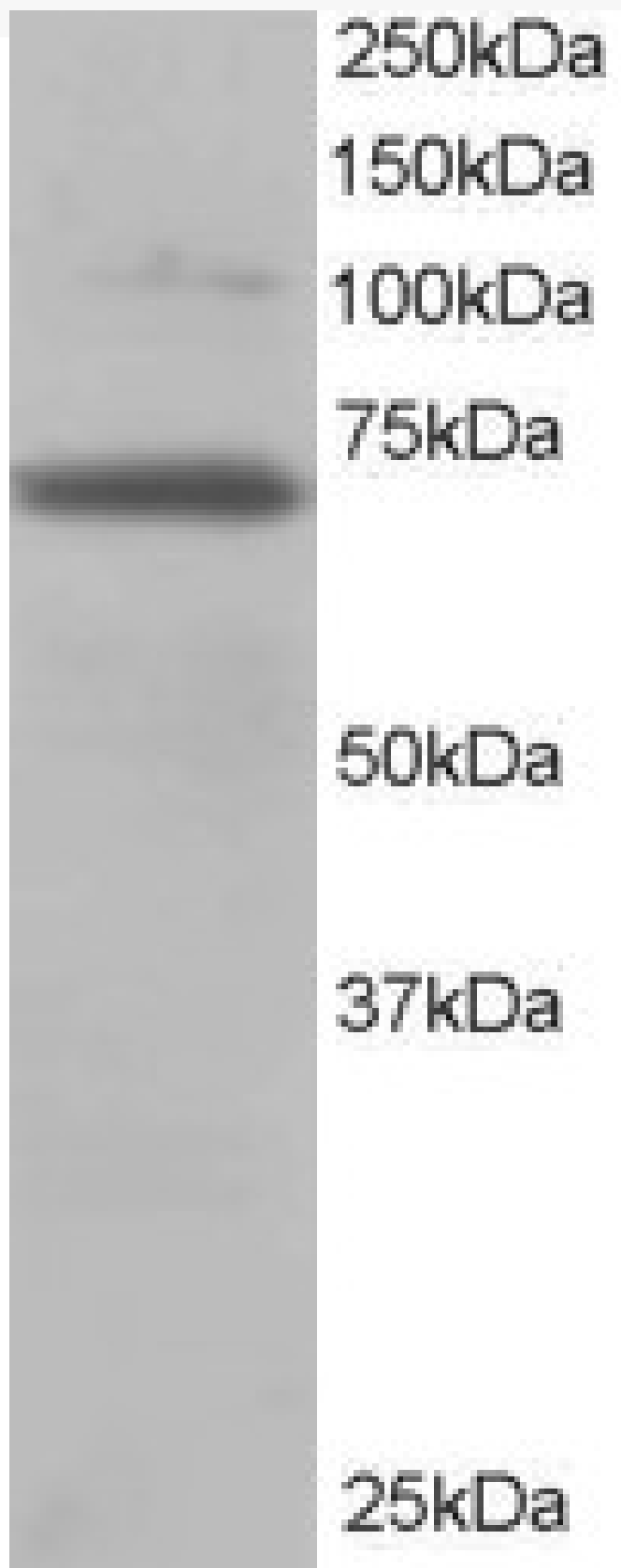


GOAT ANTI-RANGAP1 ANTIBODY

SKU: EB06253



SPECIFICATIONS

Formulation	Supplied at 0.5 mg/ml in Tris saline, 0.02% sodium azide, pH7.3 with 0.5% bovine serum albumin.
Unit Size	100 µg
Storage Instructions	Aliquot and store at -20°C. Minimize freezing and thawing.
Synonym / Alias	segregation distortion segregation distorter
Names	homolog OTTHUMP00000198757 OTTHUMP00000198756 SD MGC20266 Fug1 Ran GTPase activating protein
Accession ID	1 KIAA1835 RANGAP1
Blocking Peptide	NP_002874.1
Immunogen	EBP06253
Product Comments	Peptide with sequence ASEDIKLAETLAK-C, from the N Terminus of the protein sequence according to NP_002874.1.
Peptide Sequence	Please note that in mouse, there is a hypothetical protein called "similar to RANGAP1" (XP_139737.2) that is virtually identical.
Purification Method	ASEDIKLAETLAK-C
Shipping Instructions	Purified from goat serum by ammonium sulphate precipitation followed by antigen affinity chromatography using the immunizing peptide.
Predicted Species	Refrigerated
Reactive Species	Human, Mouse, Rat, Dog, Cow
Human Gene ID	Human, Mouse
Mouse Gene ID	5905
Product Grade	19387
IHC Results	https://prod-vector-labs-pimcore-assets.s3.us-east-1.amazonaws.com/assets/products/image/elite_medium.png
ELISA Detection Limit	In paraffin embedded Human Liver shows vesicular staining in the cytoplasm of hepatocytes. Recommended concentration: 2-4µg/ml.
Western Blot	Antibody detection limit dilution 1:32000.
Application Type	Approx 70kDa band observed in 3T3 lysates (predicted MW of 68kDa according to NP_002874). Recommended for use at 0.1-0.5µg/ml.
	Pep-ELISA, WB, IHC

DOCUMENTS

- [Data Sheet](#)

GALLERY IMAGES

