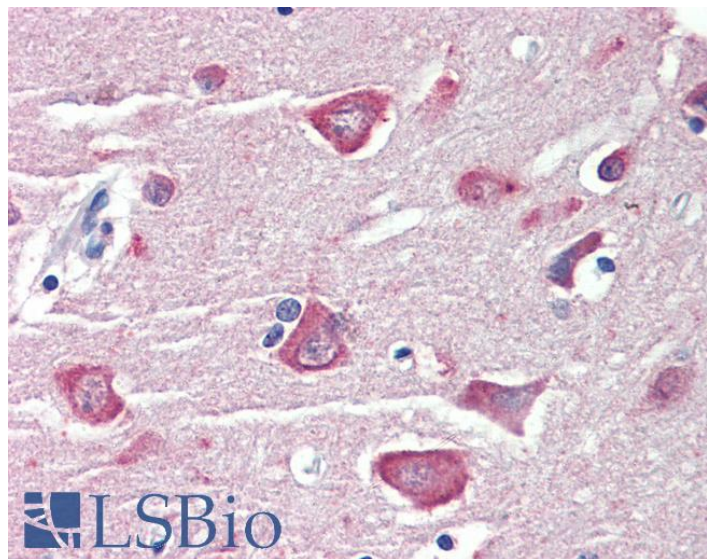


GOAT ANTI-RASSF1A ANTIBODY

SKU: EB09171



SPECIFICATIONS

Formulation	Supplied at 0.5 mg/ml in Tris saline, 0.02% sodium azide, pH7.3 with 0.5% bovine serum albumin.
Unit Size	100 µg
Storage Instructions	Aliquot and store at -20°C. Minimize freezing and thawing.
Synonym / Alias	tumor suppressor protein RDA32 pancreas-specific ras association domain family 1 protein cardiac-specific ras association domain family 1 protein WUGSC:H_LUCA12.5 Ras association domain family protein 1 Ras association domain family 1 Ras association (RalGDS/AF-6) domain family
Names	1 OTTHUMP00000195503 REH3P21 RDA32 RASSF1A NORE2A 123F2 Ras association (RalGDS/AF-6) domain family member 1 RASSF1
Accession ID	NP_009113.3; NP_733830.1; NP_733831.1; NP_733832.1
Blocking Peptide	EBP09171
Immunogen	Peptide with sequence C-SQAEIEQKIKEYN, from the internal region of the protein sequence according to NP_009113.3; NP_733830.1; NP_733831.1; NP_733832.1.
Product Comments	This antibody is expected to recognize reported isoforms A, C and D (NP_009113.3; NP_733831.1; NP_733832.1) .
Peptide Sequence	C-SQAEIEQKIKEYN

Purification Method	Purified from goat serum by ammonium sulphate precipitation followed by antigen affinity chromatography using the immunizing peptide.
Shipping Instructions	Refrigerated
Predicted Species	Human, Mouse, Rat, Dog, Cow
Reactive Species	Human
Human Gene ID	11186
Product Grade	https://prod-vector-labs-pimcore-assets.s3.us-east-1.amazonaws.com/assets/products/image/elite_medium.png
IHC Results	In paraffin embedded Human Liver shows preferential nuclear staining in hepatocytes. Paraffin embedded Human Brain (Cortex). Recommended concentration: 3.75µg/ml.
ELISA Detection Limit	Antibody detection limit dilution 1:128000.
Application Type	Pep-ELISA, IHC

DOCUMENTS

- [Data Sheet](#)

GALLERY IMAGES

