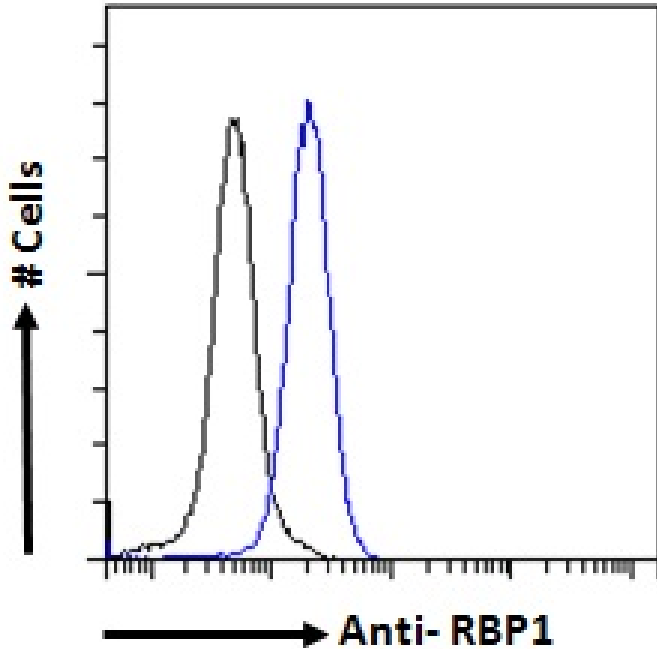


# GOAT ANTI-RBP1 ANTIBODY

SKU: EB06671



## SPECIFICATIONS

<b>Formulation</b>	Supplied at 0.5 mg/ml in Tris saline, 0.02% sodium azide, pH7.3 with 0.5% bovine serum albumin.
<b>Unit Size</b>	100 µg
<b>Storage Instructions</b>	Aliquot and store at -20°C. Minimize freezing and thawing.
<b>Synonym / Alias Names</b>	CRBP1 retinol-binding protein 1, cellular retinol binding protein 1, cellular CRABP-I CRBP1 RBPC CRBP RBP1
<b>Usage Summary</b>	<p><b>Immunofluorescence:</b> Expression of the protein seen in the cytoplasm and nucleus of U2OS cells. Recommended concentration: 10µg/ml.</p> <p><b>Flow Cytometry:</b> Flow cytometric analysis of HeLa cells. Recommended concentration: 10ug/ml.</p>
<b>Accession ID</b>	NP_002890.2
<b>Blocking Peptide</b>	EBP06671
<b>Immunogen</b>	Peptide with sequence VEGVWCKQVFKKVQ, from the C Terminus of the protein sequence according to NP_002890.2.

<b>Peptide Sequence</b>	VEGVVCKQVFKKVQ
<b>Purification Method</b>	Purified from goat serum by ammonium sulphate precipitation followed by antigen affinity chromatography using the immunizing peptide.
<b>Shipping Instructions</b>	Refrigerated
<b>Predicted Species</b>	Human, Mouse, Cow
<b>Reactive Species</b>	Human, Mouse
<b>Human Gene ID</b>	5947
<b>Product Grade</b>	<a href="https://prod-vector-labs-pimcore-assets.s3.us-east-1.amazonaws.com/assets/products/image/elite_plus_medium.png">https://prod-vector-labs-pimcore-assets.s3.us-east-1.amazonaws.com/assets/products/image/elite_plus_medium.png</a>
<b>ELISA Detection Limit</b>	Antibody detection limit dilution 1:4000.
<b>Western Blot</b>	Approx 16kDa band observed in NIH3T3 and approx 17kDa in U251 cell lysates. This molecular weight is routinely observed by other sources. (calculated MW of 22.3kDa according to Human NP_002890.2 and 15.8kDa according to Mouse NP_035384.1). Recommended concentration: 0.5-3µg/ml. Primary incubation 1 hour at room temperature.
<b>Application Type</b>	Pep-ELISA, WB, IF, FC

## GALLERY IMAGES

