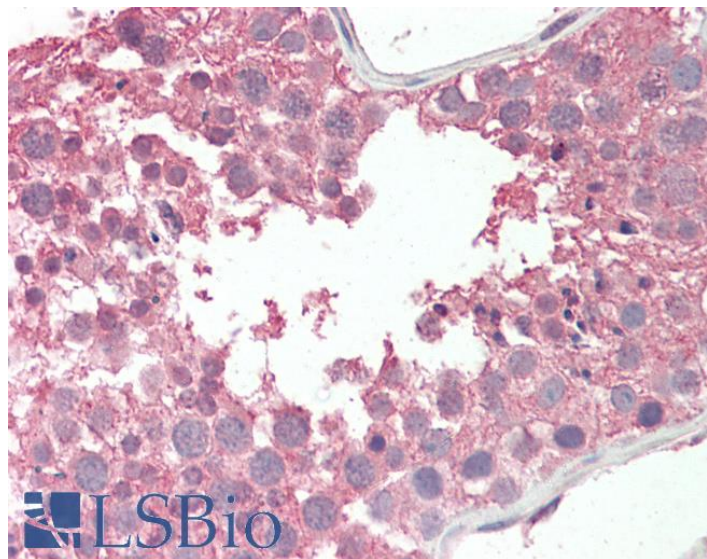


# GOAT ANTI-RCBTB2 ANTIBODY

**SKU:** EB09067



## SPECIFICATIONS

**Formulation** Supplied at 0.5 mg/ml in Tris saline, 0.02% sodium azide, pH7.3 with 0.5% bovine serum albumin.

**Unit Size** 100 µg

**Storage Instructions** Aliquot and store at -20°C. Minimize freezing and thawing.

**Synonym / Alias Names** RCBTB2|regulator of chromosome condensation (RCC1) and BTB (POZ) domain containing protein 2|CHC1L|OTTHUMP00000018399|RCC1-like G exchanging factor RLG|chromosome condensation 1-like|regulator of chromosome condensation and BTB domain containing protein 2

**Accession ID** NP\_001259.1

**Blocking Peptide** EBP09067

**Immunogen** Peptide with sequence CEHFRSSLEDNEDD, from the internal region of the protein sequence according to NP\_001259.1.

**Product Comments** This antibody is not expected to cross-react with RCBTB1.

**Peptide Sequence** CEHFRSSLEDNEDD

**Purification Method** Purified from goat serum by ammonium sulphate precipitation followed by antigen affinity chromatography using the immunizing peptide.

<b>Shipping Instructions</b>	Refrigerated
<b>Predicted Species</b>	Human, Mouse, Rat, Cow, Pig
<b>Reactive Species</b>	Human
<b>Human Gene ID</b>	1102
<b>Mouse Gene ID</b>	105670
<b>Rat Gene ID</b>	290363
<b>Product Grade</b>	<a href="https://prod-vector-labs-pimcore-assets.s3.us-east-1.amazonaws.com/assets/products/image/elite_medium.png">https://prod-vector-labs-pimcore-assets.s3.us-east-1.amazonaws.com/assets/products/image/elite_medium.png</a>
<b>IHC Results</b>	Paraffin embedded Human Testis and Prostate. Recommended concentration: 5µg/ml.
<b>ELISA</b>	
<b>Detection Limit</b>	Antibody detection limit dilution 1:2000.
<b>Western Blot</b>	Preliminary experiments gave an approx. 30kDa band in Human Liver, Lung and Tonsil lysates after 1µg/ml antibody staining. Please note that currently we cannot find an explanation in the literature for the band we observe given the calculated size of 60.3kDa according to NP_001259.1. The 30kDa band was successfully blocked by incubation with the immunizing peptide.
<b>Application Type</b>	Pep-ELISA, IHC

## DOCUMENTS

- [Data Sheet](#)

## GALLERY IMAGES

