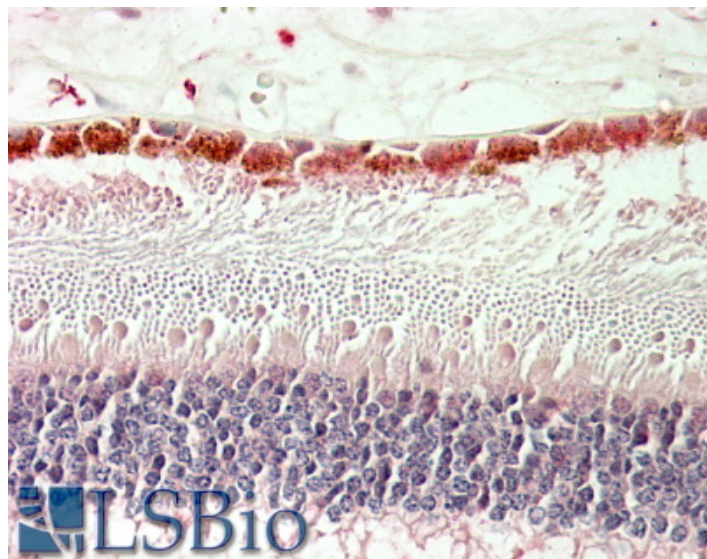


# GOAT ANTI-RDH5 (AA 19-31) ANTIBODY

**SKU:** EB10078



## SPECIFICATIONS

<b>Formulation</b>	Supplied at 0.5 mg/ml in Tris saline, 0.02% sodium azide, pH7.3 with 0.5% bovine serum albumin.
<b>Unit Size</b>	100 µg
<b>Storage Instructions</b>	Aliquot and store at -20°C. Minimize freezing and thawing.
<b>Synonym / Alias Names</b>	RDH5 short chain dehydrogenase/reductase family 9C,  SDR9C5 retinol dehydrogenase 5 (11-cis/9-cis) retinol dehydrogenase 5 (11-cis and 9-cis) retinol dehydrogenase 1 RDH1 HSD17B9 FLJ97089 FLJ39337 9-cis-retinol specific dehydrogenase 11-cis RDH
<b>Usage Summary</b>	<strong>Immunofluorescence:</strong> Strong expression of the protein seen in U2OS cells. Recommended concentration: 10µg/ml. <strong>Flow Cytometry:</strong> Flow cytometric analysis of U2OS cells. Recommended concentration: 10ug/ml.
<b>Accession ID</b>	NP_002896.2
<b>Blocking Peptide</b>	EBP10078
<b>Immunogen</b>	Peptide with sequence C-RDRQSLPASNAFV, from the internal region of the protein sequence according to NP_002896.2.
<b>Peptide Sequence</b>	C-RDRQSLPASNAFV
<b>Purification Method</b>	Purified from goat serum by ammonium sulphate precipitation followed by antigen affinity chromatography using the immunizing peptide.

<b>Shipping Instructions</b>	Refrigerated
<b>Predicted Species</b>	Human
<b>Reactive Species</b>	Human
<b>Human Gene ID</b>	5959
<b>Mouse Gene ID</b>	19682
<b>Product Grade</b>	<a href="https://prod-vector-labs-pimcore-assets.s3.us-east-1.amazonaws.com/assets/products/image/elite_plus_medium.png">https://prod-vector-labs-pimcore-assets.s3.us-east-1.amazonaws.com/assets/products/image/elite_plus_medium.png</a>
<b>IHC Results</b>	In paraffin embedded Human Retina shows staining of the Ganglion Cell Layer. Recommended concentration: 5-10µg/ml.
<b>ELISA</b>	
<b>Detection Limit</b>	Antibody detection limit dilution 1:8000.
<b>Western Blot</b>	Preliminary testing showed a band at approx..32kDa in Human Heart and approx. 35kDa in Human Breast lysate, after 0.3ug/ml antibody staining. (calculated MW of 35.0kDa according to NP_002896.2). Primary incubation 1 hour at room temperature.
<b>Application Type</b>	Pep-ELISA, IHC, IF, FC

## DOCUMENTS

- [Data Sheet](#)

## GALLERY IMAGES

